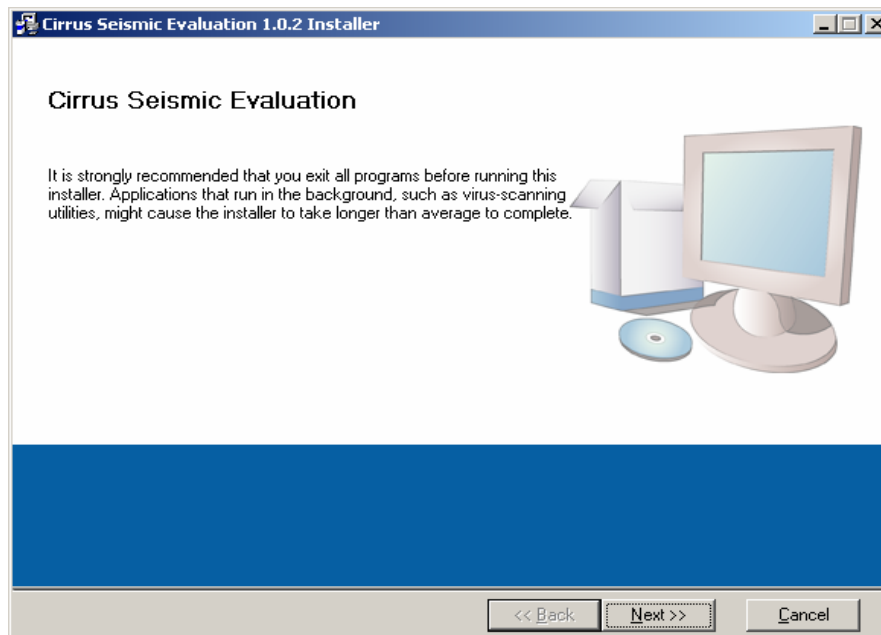


Cirrus Seismic Evaluation GUI Installation Guide

Cirrus Seismic Evaluation GUI (graphical user interface) is a generic tool controlling Cirrus Seismic Evaluation boards through a USB interface. The GUI can be obtained from www.cirrus.com/industrialsoftware.

1. GUI Installation

- 1) Go to the Cirrus Industrial Software download web site (<http://www.cirrus.com/industrialsoftware>).
- 2) Click the link, "Cirrus *Seismic Evaluation GUI Vxx*" (*xx* indicates version number).
- 3) Download the file named *SeismicEvalGUI_Vxx.zip* onto the PC and unzip it. A folder structure called "Distribution\Volume1" will be created (for example, C:\Distribution\Volume1)
- 4) Open the folder and run the *setup.exe* file (C:\Distribution\Volume1\setup.exe).
- 5) If the GUI has been installed previously, the Uninstall wizard will remove the older version (see below).
- 6) Follow the instructions presented by the *Cirrus Seismic Evaluation Installation Wizard*.



- 7) To run the GUI, go to:

Start ⇒ Programs ⇒ Cirrus Seismic Evaluation ⇒ Cirrus Seismic Evaluation

2. USBXpress® Installation

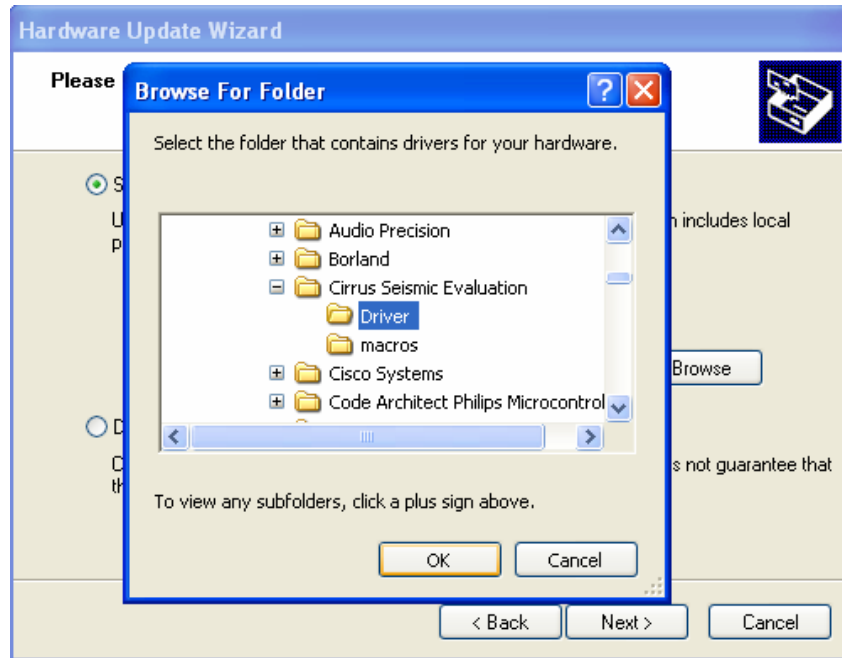
Important: The USBXpress® driver must be installed prior to launching the Cirrus Seismic Evaluation GUI.

The Cirrus Seismic Evaluation GUI uses the *USBXpress* driver to communicate with Cirrus Seismic Evaluation target boards. The *USBXpress* driver is a product of and is supported by Silicon Laboratories, Inc. (www.silabs.com). This section shows the steps necessary to install the *USBXpress* driver onto a PC. If the driver is already installed, these steps can be skipped.

- 1) Connect the target board to the PC through an available USB port.
- 2) Apply power to the target board.
- 3) The PC will detect the target as an unknown device. Using the Windows® *Device Manager*, go to the properties of the unknown device and select *Update Driver*.
- 4) Select *Install from a list or specific location* then click *Next*.

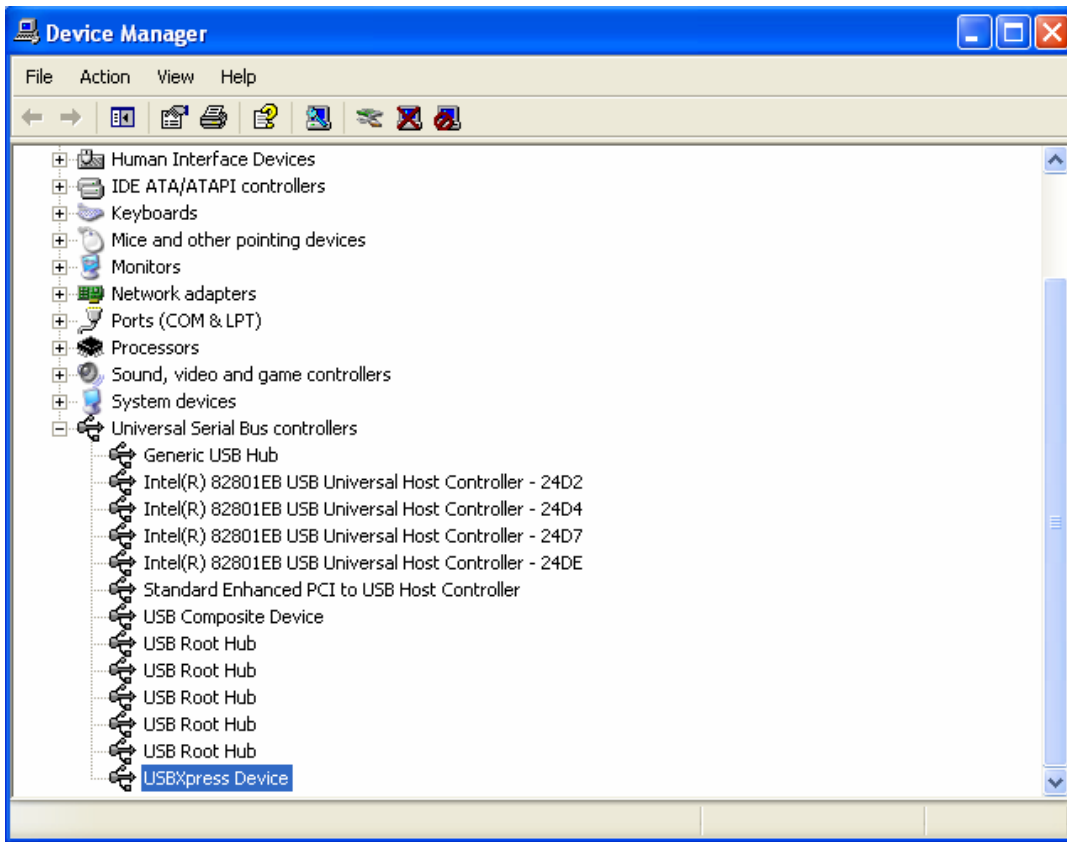


- 5) Select *Include this location in the search* and click the *Browse* button.
- 6) Select the driver directory under *C:\Program Files\Cirrus Seismic Evaluation*, then click *OK*.



- 7) The PC will install the *USBXpress* Device driver.
- 8) After installation, cycle the power to the target board.

- 9) The PC should add the *USBXpress Device* under *Universal Serial Bus controllers* in Windows *Device Manager* automatically. (See figure below.)



3. Using The Cirrus Seismic Evaluation GUI

- 10) To run the GUI, go to:

Start ⇒ **Programs** ⇒ **Cirrus Seismic Evaluation** ⇒ **Cirrus Seismic Evaluation**

For the most up-to-date information about the software, please refer to its help file:

- Within the software: *Help .. Contents*

or

- *C:\Program Files\Cirrus Seismic Evaluation\SEISMICGUI.HLP*

Contacting Cirrus Logic Support

For all product questions and inquiries contact a Cirrus Logic Sales Representative.
To find the one nearest to you go to www.cirrus.com

IMPORTANT NOTICE

Cirrus Logic, Inc. and its subsidiaries ("Cirrus") believe that the information contained in this document is accurate and reliable. However, the information is subject to change without notice and is provided "AS IS" without warranty of any kind (express or implied). Customers are advised to obtain the latest version of relevant information to verify, before placing orders, that information being relied on is current and complete. All products are sold subject to the terms and conditions of sale supplied at the time of order acknowledgment, including those pertaining to warranty, indemnification, and limitation of liability. No responsibility is assumed by Cirrus for the use of this information, including use of this information as the basis for manufacture or sale of any items, or for infringement of patents or other rights of third parties. This document is the property of Cirrus and by furnishing this information, Cirrus grants no license, express or implied under any patents, mask work rights, copyrights, trademarks, trade secrets or other intellectual property rights. Cirrus owns the copyrights associated with the information contained herein and gives consent for copies to be made of the information only for use within your organization with respect to Cirrus integrated circuits or other products of Cirrus. This consent does not extend to other copying such as copying for general distribution, advertising or promotional purposes, or for creating any work for resale.

CERTAIN APPLICATIONS USING SEMICONDUCTOR PRODUCTS MAY INVOLVE POTENTIAL RISKS OF DEATH, PERSONAL INJURY, OR SEVERE PROPERTY OR ENVIRONMENTAL DAMAGE ("CRITICAL APPLICATIONS"). CIRRUS PRODUCTS ARE NOT DESIGNED, AUTHORIZED OR WARRANTED FOR USE IN AIRCRAFT SYSTEMS, MILITARY APPLICATIONS, PRODUCTS SURGICALLY IMPLANTED INTO THE BODY, AUTOMOTIVE SAFETY OR SECURITY DEVICES, LIFE SUPPORT PRODUCTS OR OTHER CRITICAL APPLICATIONS. INCLUSION OF CIRRUS PRODUCTS IN SUCH APPLICATIONS IS UNDERSTOOD TO BE FULLY AT THE CUSTOMER'S RISK AND CIRRUS DISCLAIMS AND MAKES NO WARRANTY, EXPRESS, STATUTORY OR IMPLIED, INCLUDING THE IMPLIED WARRANTIES OF MERCHANTABILITY AND FITNESS FOR PARTICULAR PURPOSE, WITH REGARD TO ANY CIRRUS PRODUCT THAT IS USED IN SUCH A MANNER. IF THE CUSTOMER OR CUSTOMER'S CUSTOMER USES OR PERMITS THE USE OF CIRRUS PRODUCTS IN CRITICAL APPLICATIONS, CUSTOMER AGREES, BY SUCH USE, TO FULLY INDEMNIFY CIRRUS, ITS OFFICERS, DIRECTORS, EMPLOYEES, DISTRIBUTORS AND OTHER AGENTS FROM ANY AND ALL LIABILITY, INCLUDING ATTORNEYS' FEES AND COSTS, THAT MAY RESULT FROM OR ARISE IN CONNECTION WITH THESE USES.

Cirrus Logic, Cirrus, and the Cirrus Logic logo designs are trademarks of Cirrus Logic, Inc. All other brand and product names in this document may be trademarks or service marks of their respective owners.

USBXpress is a registered trademark of Silicon Laboratories, Inc.

Windows is a registered trademark of Microsoft Corporation.