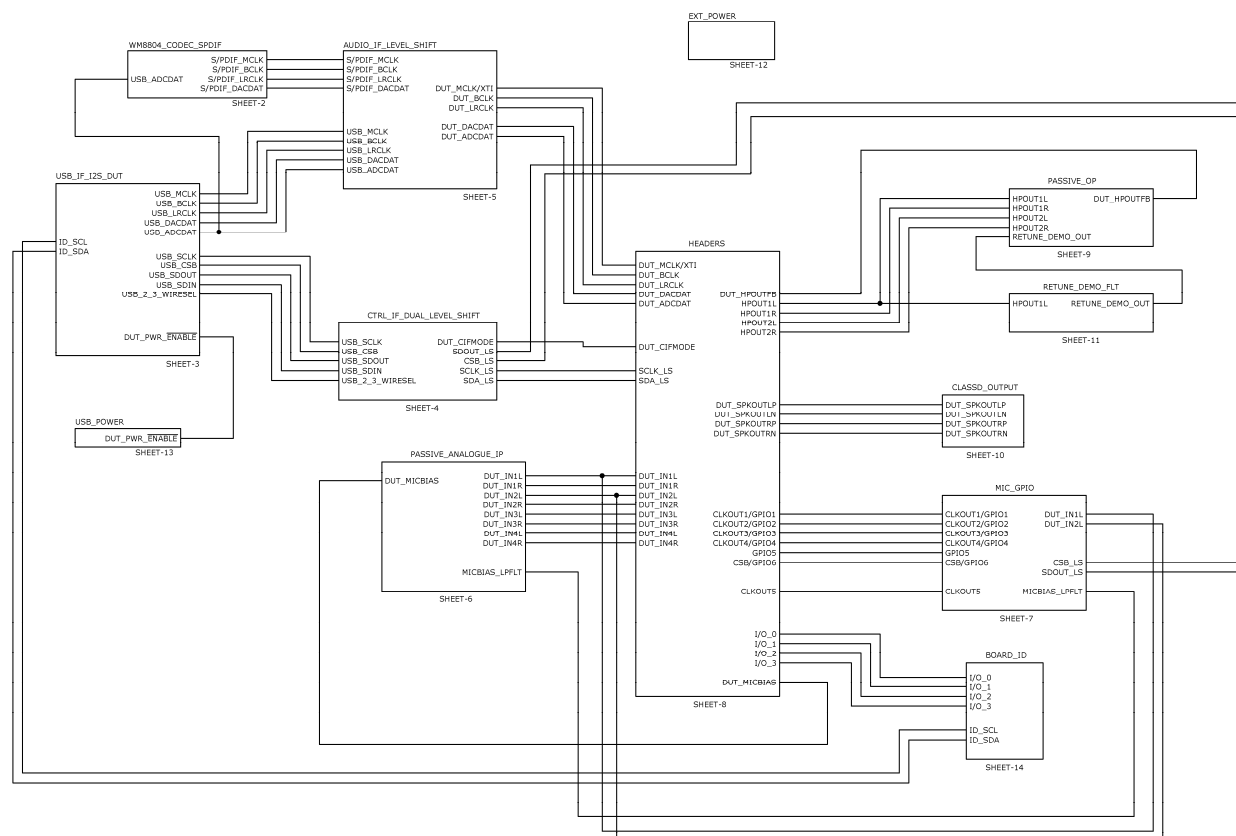


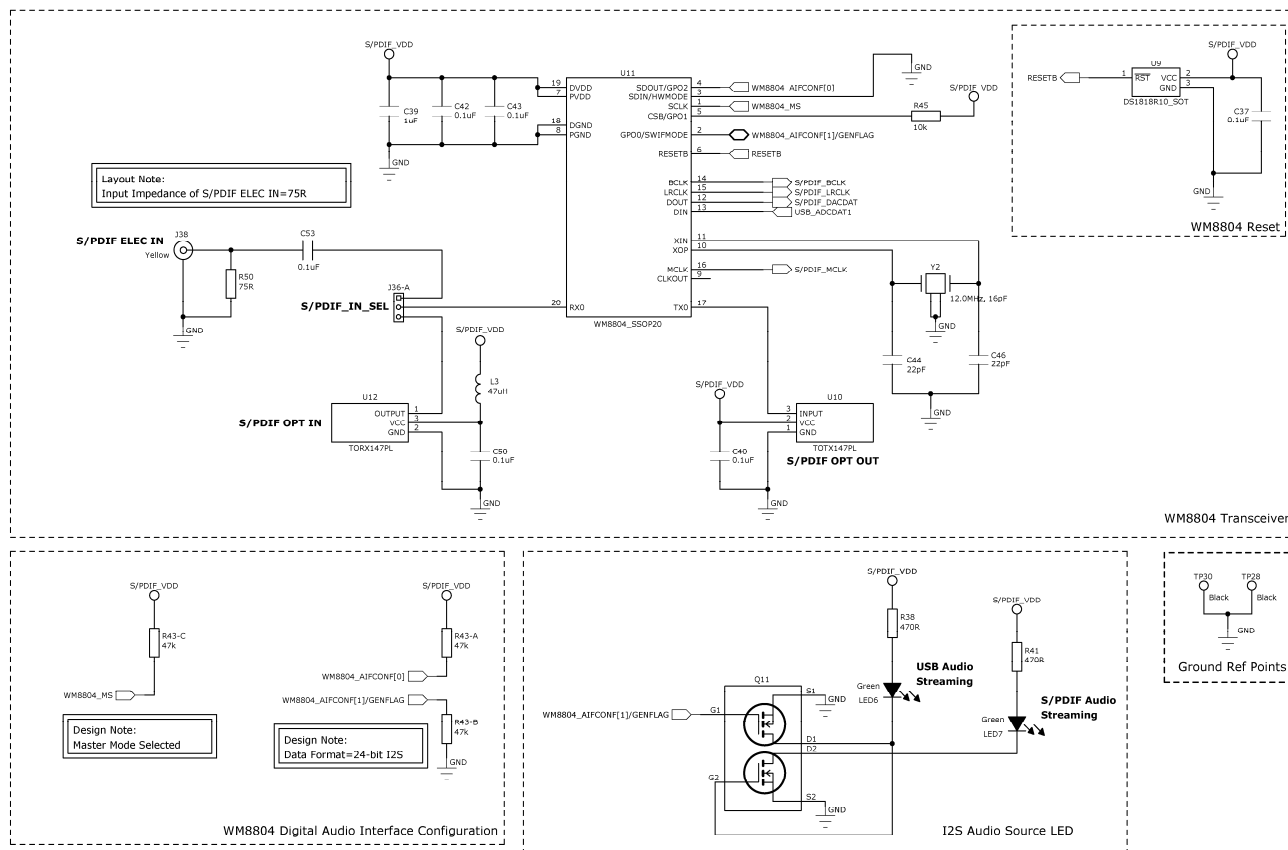
DOC TYPE:	SCHEMATIC AND LAYOUT
BOARD REFERENCE:	6243-EV1-REV1
BOARD TYPE:	Customer Main
WOLFSON DEVICE(S):	WM8962
DATE:	September 2010
DOC REVISION:	Rev 1.2

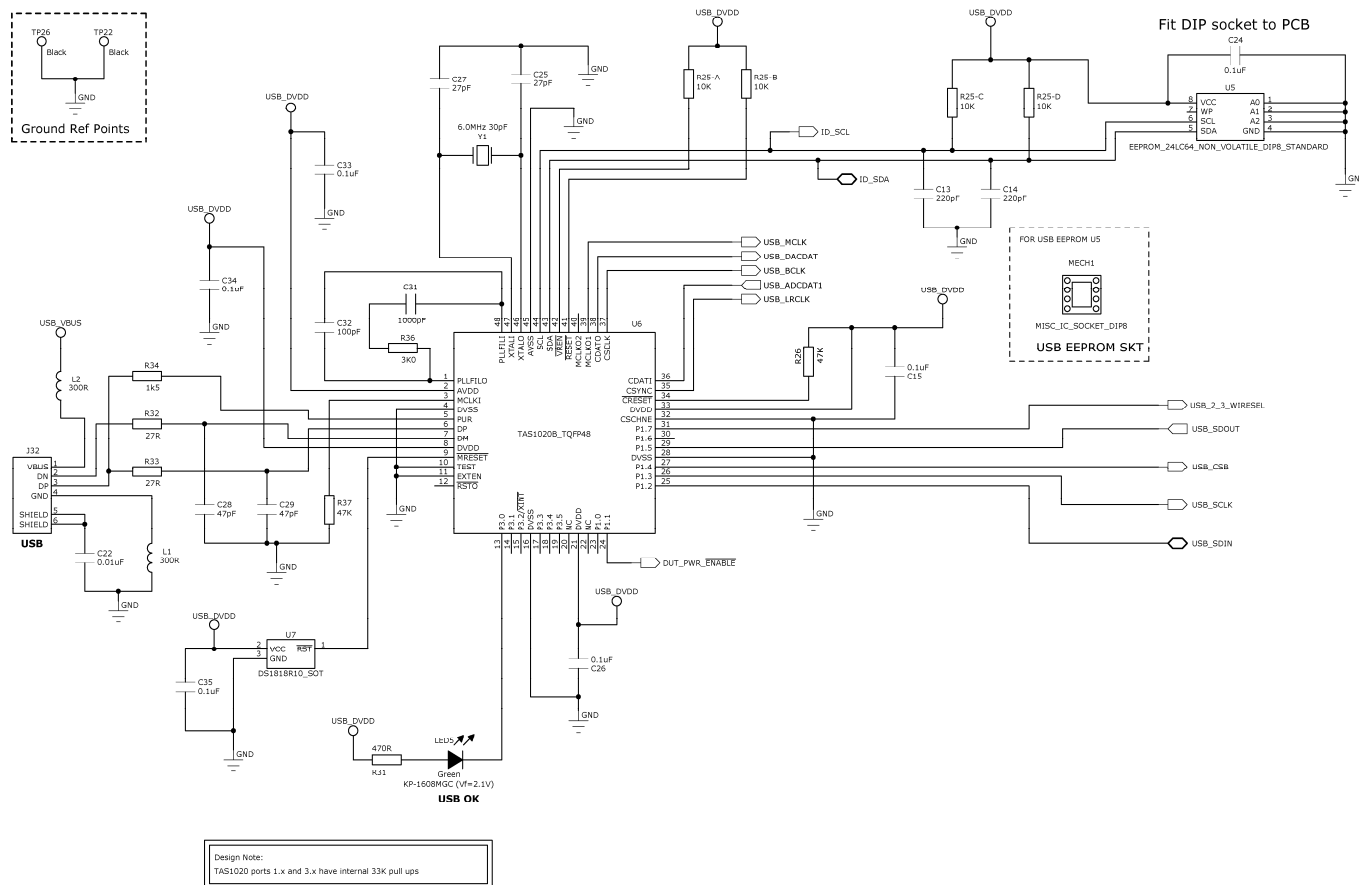
SCHEMATIC

Sheet 1: Top Level

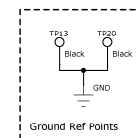
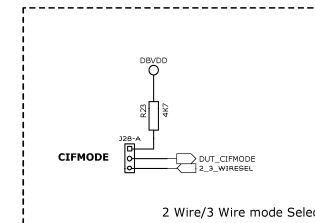
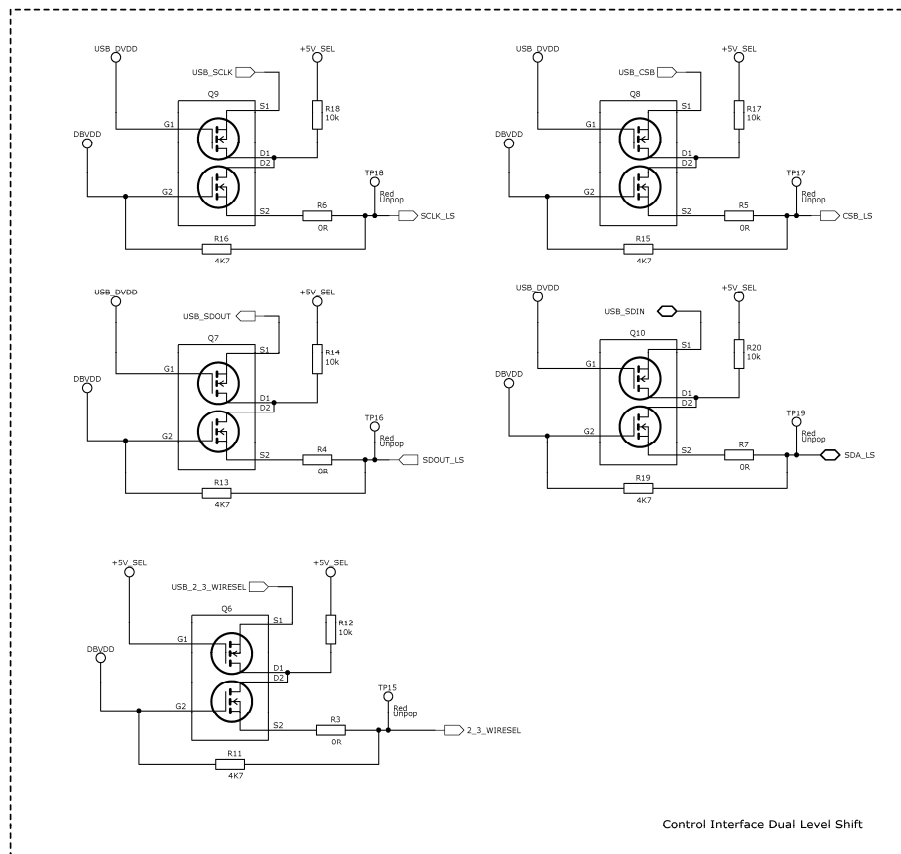


Sheet 2: S/PDIF

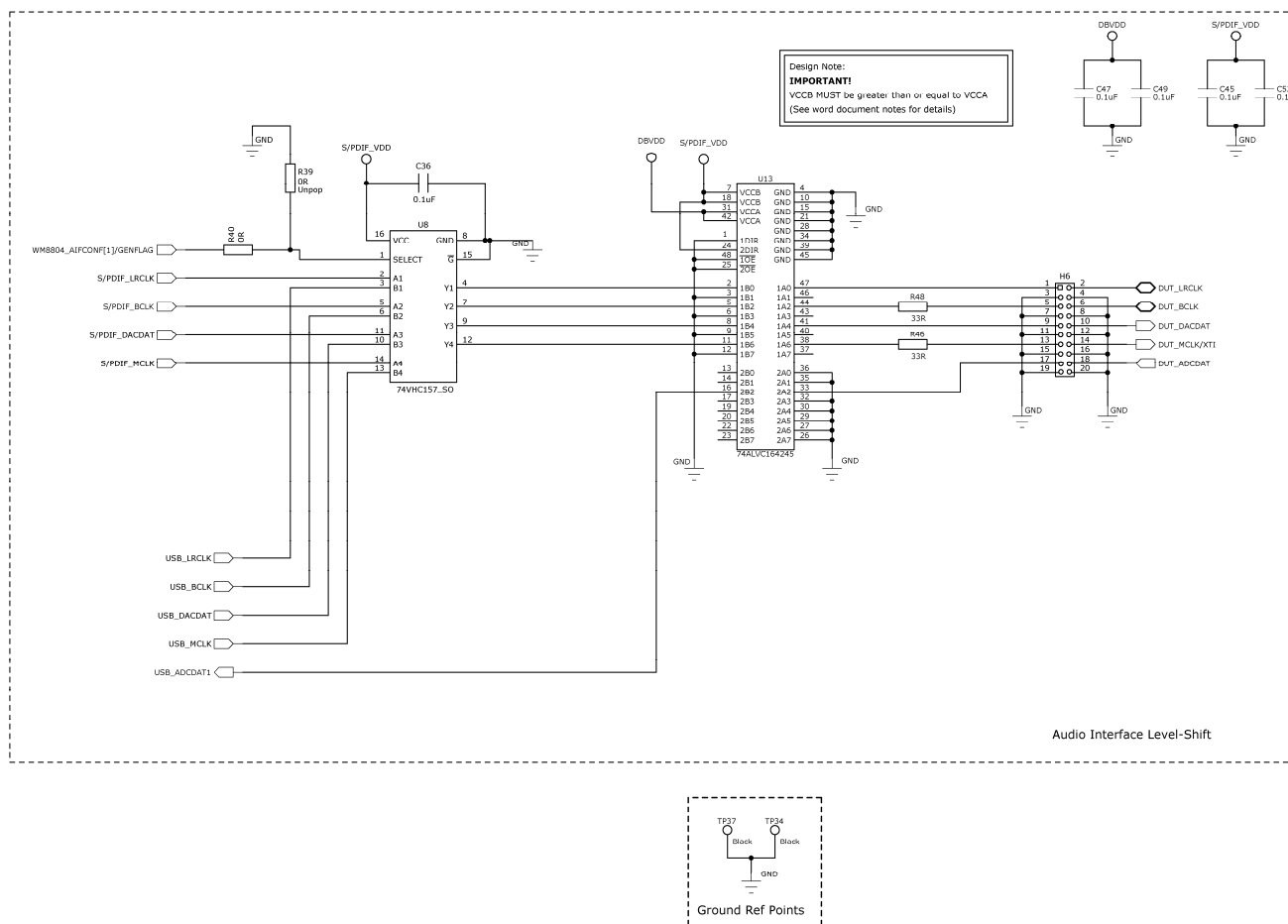




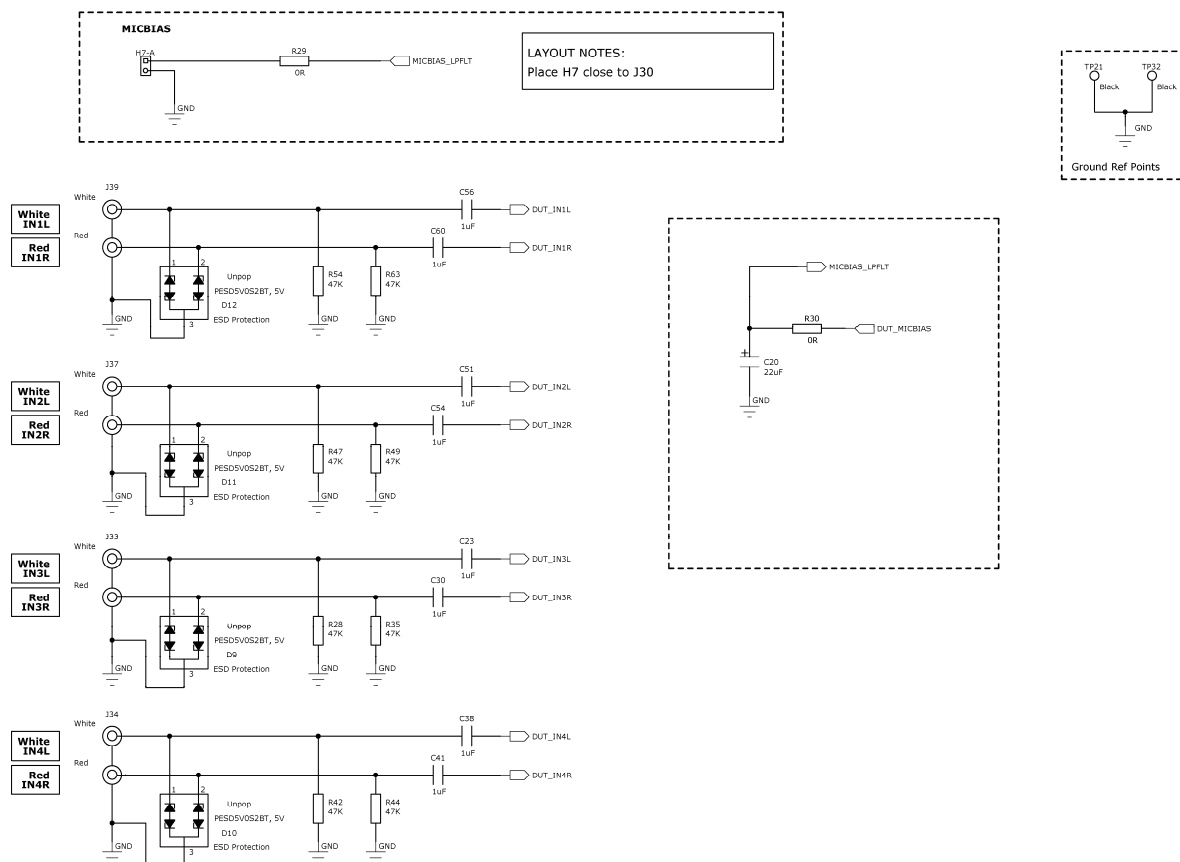
Sheet 4: Control I/F Level Shift



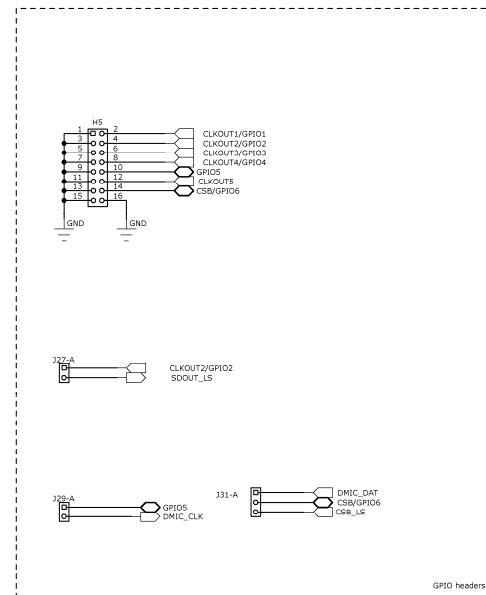
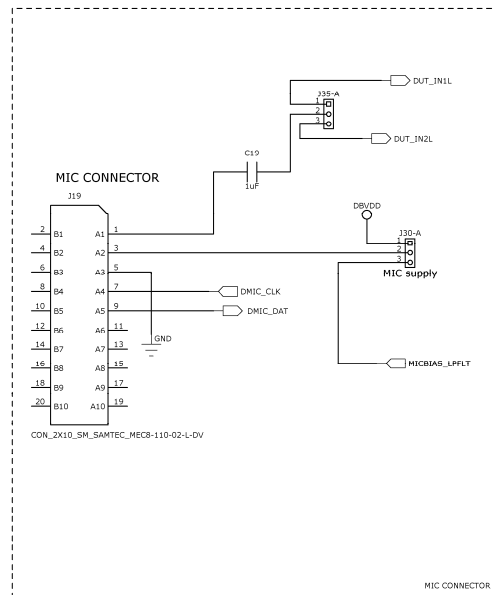
Sheet 5: Audio I/F Mux and Level Shift

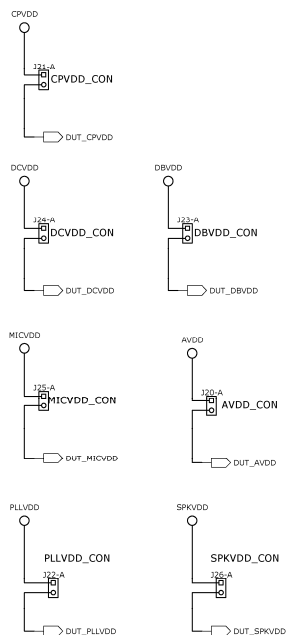


Sheet 6: Analogue Inputs

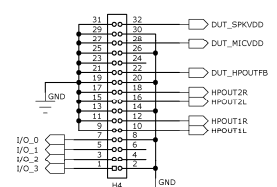
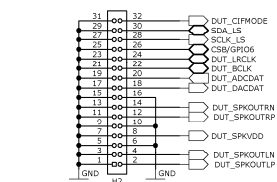
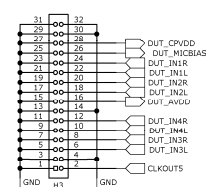
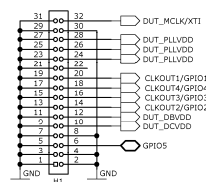
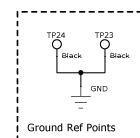


Sheet 7: Microphone and GPIO

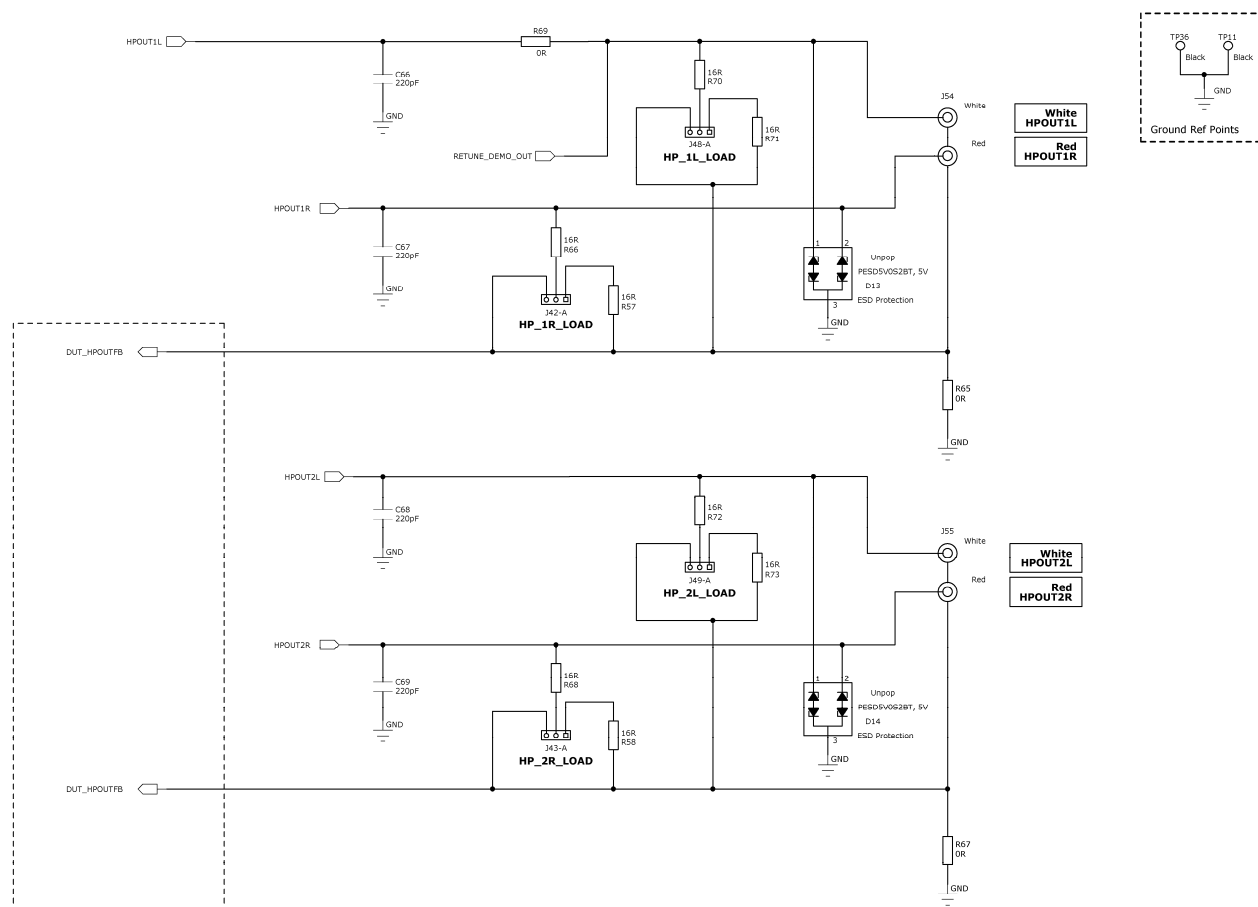




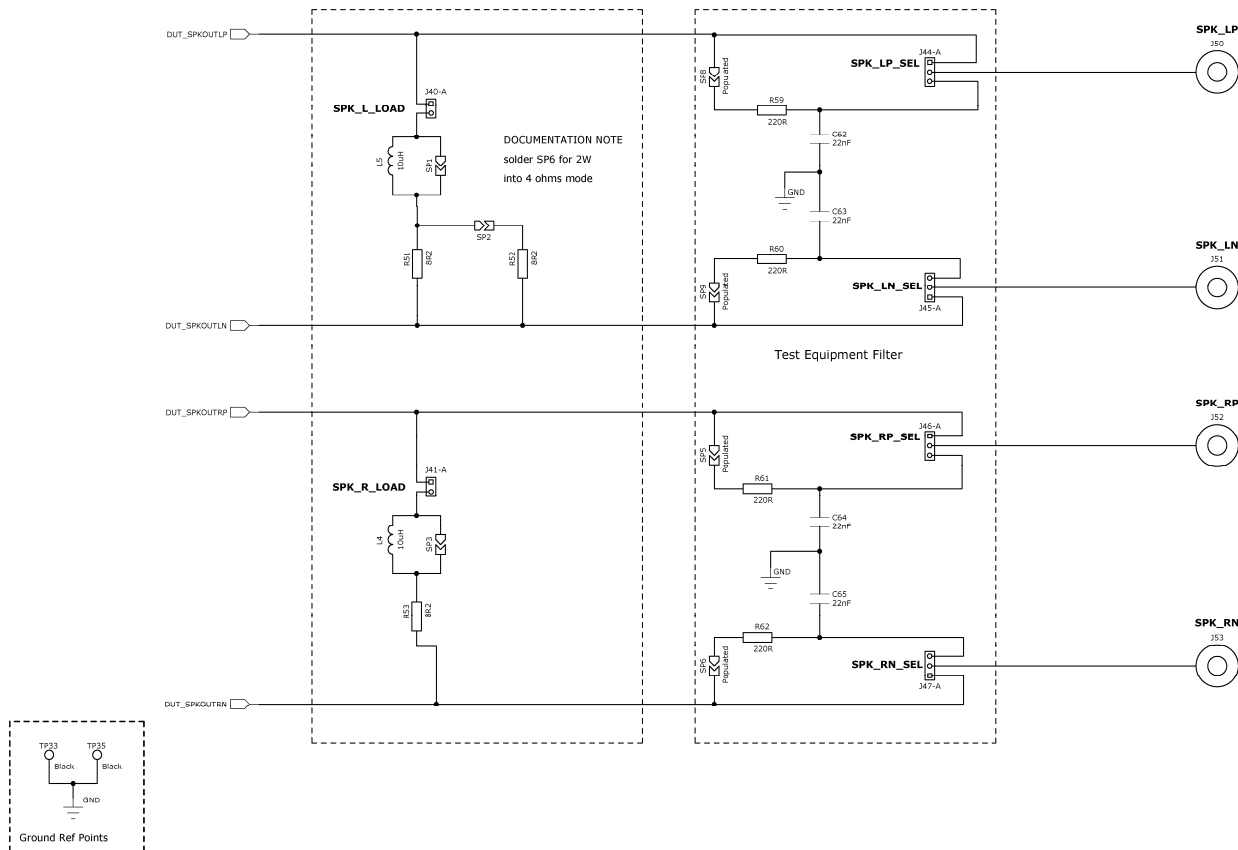
DOCUMENTATION NOTE
If 1803 mini board is present
digital current is monitored only through DBVDD



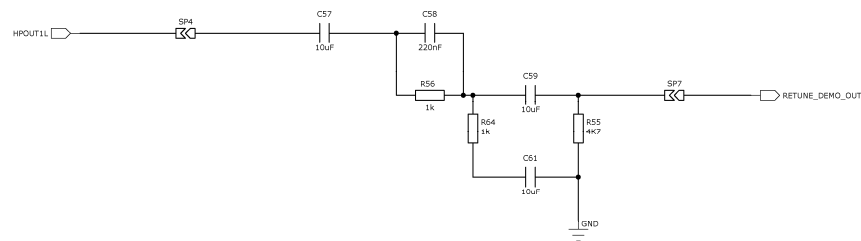
Sheet 9: Analogue Outputs



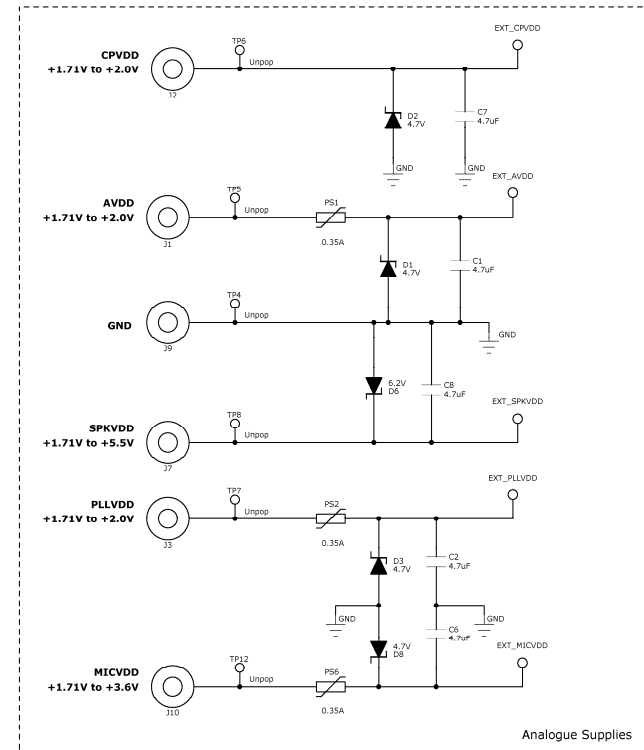
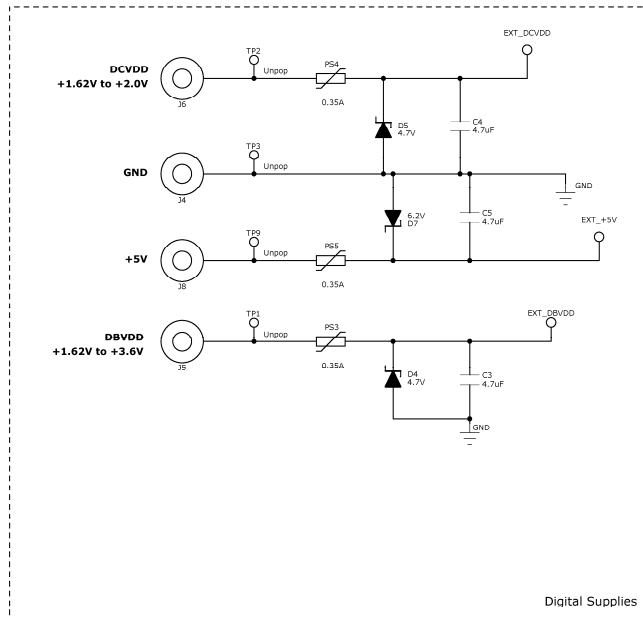
Sheet 10: Class D Speaker Outputs



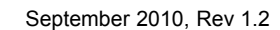
Sheet 11: ReTune™ Demo Filter



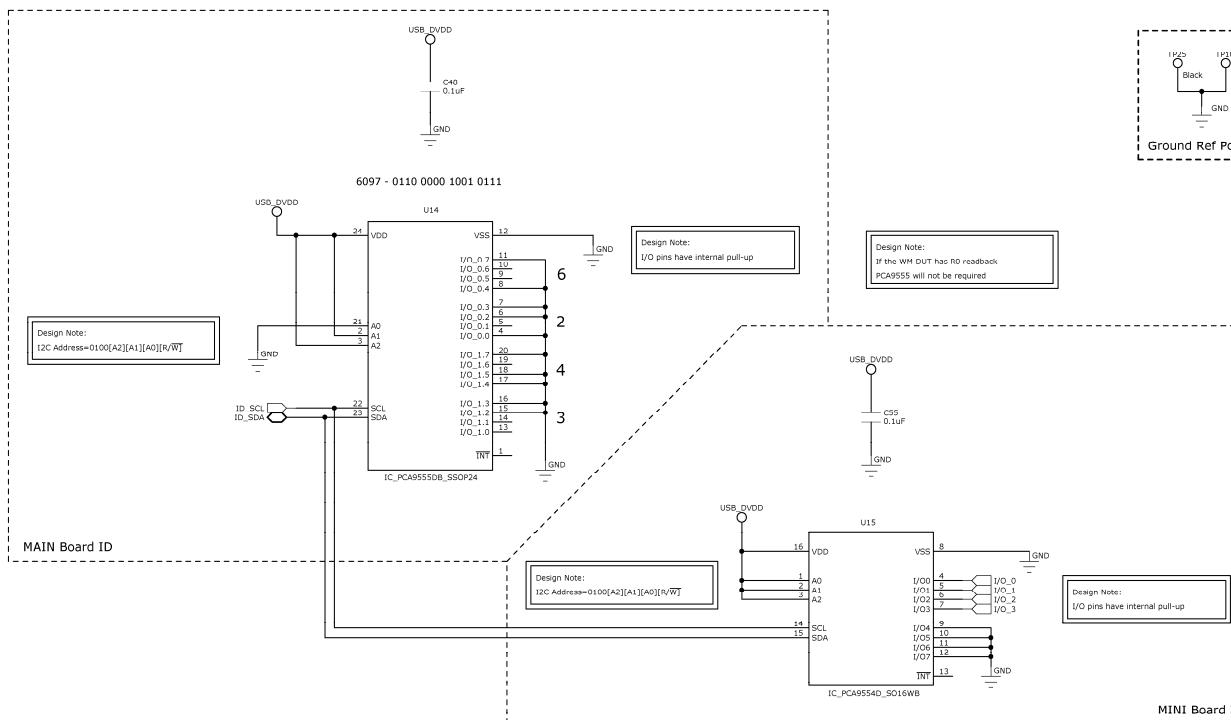
Sheet 12: External Power



Pin 1: USB_VBUS



Sheet 14: Board ID



Sheet 15: Reference Tables

<table><tr><td></td><td>Short</td><td>Open</td></tr><tr><td>124-B</td><td>No Current Monitor</td><td>Current Monitor</td></tr><tr><td>PCB Ref:</td><td>DCVDD_CON</td><td></td></tr></table>		Short	Open	124-B	No Current Monitor	Current Monitor	PCB Ref:	DCVDD_CON		<table><tr><td>UNK_124</td><td>RED</td><td>Fit to 124:1-2</td></tr><tr><td></td><td>RED</td><td>Short</td></tr></table>	UNK_124	RED	Fit to 124:1-2		RED	Short	<table><tr><td></td><td>Short 1-2</td><td>Short 2-3</td></tr><tr><td>116-B</td><td>EXT DCVDD</td><td>USB DCVDD</td></tr><tr><td>PCB Ref:</td><td>DCVDD_SEL</td><td></td></tr></table>		Short 1-2	Short 2-3	116-B	EXT DCVDD	USB DCVDD	PCB Ref:	DCVDD_SEL		<table><tr><td>UNK_116</td><td>RED</td><td>Fit to 116:2-3</td></tr><tr><td></td><td>RED</td><td>2-3</td></tr></table>	UNK_116	RED	Fit to 116:2-3		RED	2-3	<table><tr><td></td><td>Short</td><td>Open</td></tr><tr><td>140-B</td><td>LOAD</td><td>NO LOAD</td></tr><tr><td>PCB Ref:</td><td>SPKL_LOAD</td><td></td></tr></table>		Short	Open	140-B	LOAD	NO LOAD	PCB Ref:	SPKL_LOAD		<table><tr><td>UNK_140</td><td>YELLOW</td><td>Fit to 140:1-2</td></tr><tr><td></td><td>YELLOW</td><td>Short</td></tr></table>	UNK_140	YELLOW	Fit to 140:1-2		YELLOW	Short
	Short	Open																																																
124-B	No Current Monitor	Current Monitor																																																
PCB Ref:	DCVDD_CON																																																	
UNK_124	RED	Fit to 124:1-2																																																
	RED	Short																																																
	Short 1-2	Short 2-3																																																
116-B	EXT DCVDD	USB DCVDD																																																
PCB Ref:	DCVDD_SEL																																																	
UNK_116	RED	Fit to 116:2-3																																																
	RED	2-3																																																
	Short	Open																																																
140-B	LOAD	NO LOAD																																																
PCB Ref:	SPKL_LOAD																																																	
UNK_140	YELLOW	Fit to 140:1-2																																																
	YELLOW	Short																																																
<table><tr><td></td><td>Short</td><td>Open</td></tr><tr><td>123-B</td><td>No Current Monitor</td><td>Current Monitor</td></tr><tr><td>PCB Ref:</td><td>DBVDD_CON</td><td></td></tr></table>		Short	Open	123-B	No Current Monitor	Current Monitor	PCB Ref:	DBVDD_CON		<table><tr><td>UNK_123</td><td>RED</td><td>Fit to 123:1-2</td></tr><tr><td></td><td>RED</td><td>Short</td></tr></table>	UNK_123	RED	Fit to 123:1-2		RED	Short	<table><tr><td></td><td>Short 1-2</td><td>Short 2-3</td></tr><tr><td>115-B</td><td>EXT DBVDD</td><td>USB DBVDD</td></tr><tr><td>PCB Ref:</td><td>DBVDD_SEL</td><td></td></tr></table>		Short 1-2	Short 2-3	115-B	EXT DBVDD	USB DBVDD	PCB Ref:	DBVDD_SEL		<table><tr><td>UNK_115</td><td>RED</td><td>Fit to 115:2-3</td></tr><tr><td></td><td>RED</td><td>2-3</td></tr></table>	UNK_115	RED	Fit to 115:2-3		RED	2-3	<table><tr><td></td><td>Short</td><td>Open</td></tr><tr><td>141-B</td><td>LOAD</td><td>NO LOAD</td></tr><tr><td>PCB Ref:</td><td>SPKR_LOAD</td><td></td></tr></table>		Short	Open	141-B	LOAD	NO LOAD	PCB Ref:	SPKR_LOAD		<table><tr><td>UNK_141</td><td>YELLOW</td><td>Fit to 141:1-2</td></tr><tr><td></td><td>YELLOW</td><td>Short</td></tr></table>	UNK_141	YELLOW	Fit to 141:1-2		YELLOW	Short
	Short	Open																																																
123-B	No Current Monitor	Current Monitor																																																
PCB Ref:	DBVDD_CON																																																	
UNK_123	RED	Fit to 123:1-2																																																
	RED	Short																																																
	Short 1-2	Short 2-3																																																
115-B	EXT DBVDD	USB DBVDD																																																
PCB Ref:	DBVDD_SEL																																																	
UNK_115	RED	Fit to 115:2-3																																																
	RED	2-3																																																
	Short	Open																																																
141-B	LOAD	NO LOAD																																																
PCB Ref:	SPKR_LOAD																																																	
UNK_141	YELLOW	Fit to 141:1-2																																																
	YELLOW	Short																																																
<table><tr><td></td><td>Short</td><td>Open</td></tr><tr><td>120-B</td><td>No Current Monitor</td><td>Current Monitor</td></tr><tr><td>PCB Ref:</td><td>AVDD_CON</td><td></td></tr></table>		Short	Open	120-B	No Current Monitor	Current Monitor	PCB Ref:	AVDD_CON		<table><tr><td>UNK_120</td><td>RED</td><td>Fit to 120:1-2</td></tr><tr><td></td><td>RED</td><td>Short</td></tr></table>	UNK_120	RED	Fit to 120:1-2		RED	Short	<table><tr><td></td><td>Short 1-2</td><td>Short 2-3</td></tr><tr><td>112-B</td><td>EXT AVDD</td><td>USB AVDD</td></tr><tr><td>PCB Ref:</td><td>AVDD_SEL</td><td></td></tr></table>		Short 1-2	Short 2-3	112-B	EXT AVDD	USB AVDD	PCB Ref:	AVDD_SEL		<table><tr><td>UNK_112</td><td>RED</td><td>Fit to 112:2-3</td></tr><tr><td></td><td>RED</td><td>2-3</td></tr></table>	UNK_112	RED	Fit to 112:2-3		RED	2-3	<table><tr><td></td><td>Short 1-2</td><td>Short 2-3</td></tr><tr><td>148-B</td><td>32R Load</td><td>16R Load</td></tr><tr><td>PCB Ref:</td><td>HP_1L_LOAD</td><td></td></tr></table>		Short 1-2	Short 2-3	148-B	32R Load	16R Load	PCB Ref:	HP_1L_LOAD		<table><tr><td>UNK_148</td><td>YELLOW</td><td>Fit to 148:1-2</td></tr><tr><td></td><td>YELLOW</td><td>1-2</td></tr></table>	UNK_148	YELLOW	Fit to 148:1-2		YELLOW	1-2
	Short	Open																																																
120-B	No Current Monitor	Current Monitor																																																
PCB Ref:	AVDD_CON																																																	
UNK_120	RED	Fit to 120:1-2																																																
	RED	Short																																																
	Short 1-2	Short 2-3																																																
112-B	EXT AVDD	USB AVDD																																																
PCB Ref:	AVDD_SEL																																																	
UNK_112	RED	Fit to 112:2-3																																																
	RED	2-3																																																
	Short 1-2	Short 2-3																																																
148-B	32R Load	16R Load																																																
PCB Ref:	HP_1L_LOAD																																																	
UNK_148	YELLOW	Fit to 148:1-2																																																
	YELLOW	1-2																																																
<table><tr><td></td><td>Short</td><td>Open</td></tr><tr><td>125-B</td><td>No Current Monitor</td><td>Current Monitor</td></tr><tr><td>PCB Ref:</td><td>MICVDD_CON</td><td></td></tr></table>		Short	Open	125-B	No Current Monitor	Current Monitor	PCB Ref:	MICVDD_CON		<table><tr><td>UNK_125</td><td>RED</td><td>Fit to 125:1-2</td></tr><tr><td></td><td>RED</td><td>Short</td></tr></table>	UNK_125	RED	Fit to 125:1-2		RED	Short	<table><tr><td></td><td>Short 1-2</td><td>Short 2-3</td></tr><tr><td>117-B</td><td>EXT MICVDD</td><td>USB MICVDD</td></tr><tr><td>PCB Ref:</td><td>MICVDD_SEL</td><td></td></tr></table>		Short 1-2	Short 2-3	117-B	EXT MICVDD	USB MICVDD	PCB Ref:	MICVDD_SEL		<table><tr><td>UNK_117</td><td>RED</td><td>Fit to 117:2-3</td></tr><tr><td></td><td>RED</td><td>2-3</td></tr></table>	UNK_117	RED	Fit to 117:2-3		RED	2-3	<table><tr><td></td><td>Short 1-2</td><td>Short 2-3</td></tr><tr><td>142-B</td><td>32R Load</td><td>16R Load</td></tr><tr><td>PCB Ref:</td><td>HP_1R_LOAD</td><td></td></tr></table>		Short 1-2	Short 2-3	142-B	32R Load	16R Load	PCB Ref:	HP_1R_LOAD		<table><tr><td>UNK_142</td><td>YELLOW</td><td>Fit to 142:1-2</td></tr><tr><td></td><td>YELLOW</td><td>1-2</td></tr></table>	UNK_142	YELLOW	Fit to 142:1-2		YELLOW	1-2
	Short	Open																																																
125-B	No Current Monitor	Current Monitor																																																
PCB Ref:	MICVDD_CON																																																	
UNK_125	RED	Fit to 125:1-2																																																
	RED	Short																																																
	Short 1-2	Short 2-3																																																
117-B	EXT MICVDD	USB MICVDD																																																
PCB Ref:	MICVDD_SEL																																																	
UNK_117	RED	Fit to 117:2-3																																																
	RED	2-3																																																
	Short 1-2	Short 2-3																																																
142-B	32R Load	16R Load																																																
PCB Ref:	HP_1R_LOAD																																																	
UNK_142	YELLOW	Fit to 142:1-2																																																
	YELLOW	1-2																																																
<table><tr><td></td><td>Short</td><td>Open</td></tr><tr><td>122-B</td><td>No Current Monitor</td><td>Current Monitor</td></tr><tr><td>PCB Ref:</td><td>PLLVD_CON</td><td></td></tr></table>		Short	Open	122-B	No Current Monitor	Current Monitor	PCB Ref:	PLLVD_CON		<table><tr><td>UNK_122</td><td>RED</td><td>Fit to 122:1-2</td></tr><tr><td></td><td>RED</td><td>Short</td></tr></table>	UNK_122	RED	Fit to 122:1-2		RED	Short	<table><tr><td></td><td>Short 1-2</td><td>Short 2-3</td></tr><tr><td>114-B</td><td>EXT PLLVDD</td><td>USB PLLVDD</td></tr><tr><td>PCB Ref:</td><td>PLLVD_SEL</td><td></td></tr></table>		Short 1-2	Short 2-3	114-B	EXT PLLVDD	USB PLLVDD	PCB Ref:	PLLVD_SEL		<table><tr><td>UNK_114</td><td>RED</td><td>Fit to 114:2-3</td></tr><tr><td></td><td>RED</td><td>2-3</td></tr></table>	UNK_114	RED	Fit to 114:2-3		RED	2-3	<table><tr><td></td><td>Short 1-2</td><td>Short 2-3</td></tr><tr><td>149-B</td><td>32R Load</td><td>16R Load</td></tr><tr><td>PCB Ref:</td><td>HP_2L_LOAD</td><td></td></tr></table>		Short 1-2	Short 2-3	149-B	32R Load	16R Load	PCB Ref:	HP_2L_LOAD		<table><tr><td>UNK_149</td><td>YELLOW</td><td>Fit to 149:1-2</td></tr><tr><td></td><td>YELLOW</td><td>1-2</td></tr></table>	UNK_149	YELLOW	Fit to 149:1-2		YELLOW	1-2
	Short	Open																																																
122-B	No Current Monitor	Current Monitor																																																
PCB Ref:	PLLVD_CON																																																	
UNK_122	RED	Fit to 122:1-2																																																
	RED	Short																																																
	Short 1-2	Short 2-3																																																
114-B	EXT PLLVDD	USB PLLVDD																																																
PCB Ref:	PLLVD_SEL																																																	
UNK_114	RED	Fit to 114:2-3																																																
	RED	2-3																																																
	Short 1-2	Short 2-3																																																
149-B	32R Load	16R Load																																																
PCB Ref:	HP_2L_LOAD																																																	
UNK_149	YELLOW	Fit to 149:1-2																																																
	YELLOW	1-2																																																
<table><tr><td></td><td>Short</td><td>Open</td></tr><tr><td>121-B</td><td>No Current Monitor</td><td>Current Monitor</td></tr><tr><td>PCB Ref:</td><td>CPVDD_CON</td><td></td></tr></table>		Short	Open	121-B	No Current Monitor	Current Monitor	PCB Ref:	CPVDD_CON		<table><tr><td>UNK_121</td><td>RED</td><td>Fit to 121:1-2</td></tr><tr><td></td><td>RED</td><td>Short</td></tr></table>	UNK_121	RED	Fit to 121:1-2		RED	Short	<table><tr><td></td><td>Short 1-2</td><td>Short 2-3</td></tr><tr><td>113-B</td><td>EXT CPVDD</td><td>USB CPVDD</td></tr><tr><td>PCB Ref:</td><td>CPVDD_SEL</td><td></td></tr></table>		Short 1-2	Short 2-3	113-B	EXT CPVDD	USB CPVDD	PCB Ref:	CPVDD_SEL		<table><tr><td>UNK_113</td><td>RED</td><td>Fit to 113:2-3</td></tr><tr><td></td><td>RED</td><td>2-3</td></tr></table>	UNK_113	RED	Fit to 113:2-3		RED	2-3	<table><tr><td></td><td>Short 1-2</td><td>Short 2-3</td></tr><tr><td>143-B</td><td>32R Load</td><td>16R Load</td></tr><tr><td>PCB Ref:</td><td>HP_2R_LOAD</td><td></td></tr></table>		Short 1-2	Short 2-3	143-B	32R Load	16R Load	PCB Ref:	HP_2R_LOAD		<table><tr><td>UNK_143</td><td>YELLOW</td><td>Fit to 143:1-2</td></tr><tr><td></td><td>YELLOW</td><td>1-2</td></tr></table>	UNK_143	YELLOW	Fit to 143:1-2		YELLOW	1-2
	Short	Open																																																
121-B	No Current Monitor	Current Monitor																																																
PCB Ref:	CPVDD_CON																																																	
UNK_121	RED	Fit to 121:1-2																																																
	RED	Short																																																
	Short 1-2	Short 2-3																																																
113-B	EXT CPVDD	USB CPVDD																																																
PCB Ref:	CPVDD_SEL																																																	
UNK_113	RED	Fit to 113:2-3																																																
	RED	2-3																																																
	Short 1-2	Short 2-3																																																
143-B	32R Load	16R Load																																																
PCB Ref:	HP_2R_LOAD																																																	
UNK_143	YELLOW	Fit to 143:1-2																																																
	YELLOW	1-2																																																
<table><tr><td></td><td>Short</td><td>Open</td></tr><tr><td>126-B</td><td>No Current Monitor</td><td>Current Monitor</td></tr><tr><td>PCB Ref:</td><td>SPKVDD_CON</td><td></td></tr></table>		Short	Open	126-B	No Current Monitor	Current Monitor	PCB Ref:	SPKVDD_CON		<table><tr><td>UNK_126</td><td>RED</td><td>Fit to 126:1-2</td></tr><tr><td></td><td>RED</td><td>Short</td></tr></table>	UNK_126	RED	Fit to 126:1-2		RED	Short	<table><tr><td></td><td>Short 1-2</td><td>Short 2-3</td></tr><tr><td>118-B</td><td>EXT SPKVDD</td><td>USB SPKVDD</td></tr><tr><td>PCB Ref:</td><td>SPKVDD_SEL</td><td></td></tr></table>		Short 1-2	Short 2-3	118-B	EXT SPKVDD	USB SPKVDD	PCB Ref:	SPKVDD_SEL		<table><tr><td>UNK_118</td><td>RED</td><td>Fit to 118:2-3</td></tr><tr><td></td><td>RED</td><td>2-3</td></tr></table>	UNK_118	RED	Fit to 118:2-3		RED	2-3	<table><tr><td></td><td>Short 1-2</td><td>Short 2-3</td></tr><tr><td>111-B</td><td>EXT +5V</td><td>USB +5V</td></tr><tr><td>PCB Ref:</td><td>+5V_SEL</td><td></td></tr></table>		Short 1-2	Short 2-3	111-B	EXT +5V	USB +5V	PCB Ref:	+5V_SEL		<table><tr><td>UNK_111</td><td>RED</td><td>Fit to 111:2-3</td></tr><tr><td></td><td>RED</td><td>2-3</td></tr></table>	UNK_111	RED	Fit to 111:2-3		RED	2-3
	Short	Open																																																
126-B	No Current Monitor	Current Monitor																																																
PCB Ref:	SPKVDD_CON																																																	
UNK_126	RED	Fit to 126:1-2																																																
	RED	Short																																																
	Short 1-2	Short 2-3																																																
118-B	EXT SPKVDD	USB SPKVDD																																																
PCB Ref:	SPKVDD_SEL																																																	
UNK_118	RED	Fit to 118:2-3																																																
	RED	2-3																																																
	Short 1-2	Short 2-3																																																
111-B	EXT +5V	USB +5V																																																
PCB Ref:	+5V_SEL																																																	
UNK_111	RED	Fit to 111:2-3																																																
	RED	2-3																																																
				<table><tr><td></td><td>Short</td><td>Open</td></tr><tr><td>140-B</td><td>LOAD</td><td>NO LOAD</td></tr><tr><td>PCB Ref:</td><td>SPKL_LOAD</td><td></td></tr></table>		Short	Open	140-B	LOAD	NO LOAD	PCB Ref:	SPKL_LOAD		<table><tr><td>UNK_140</td><td>YELLOW</td><td>Fit to 140:1-2</td></tr><tr><td></td><td>YELLOW</td><td>Short</td></tr></table>	UNK_140	YELLOW	Fit to 140:1-2		YELLOW	Short																														
	Short	Open																																																
140-B	LOAD	NO LOAD																																																
PCB Ref:	SPKL_LOAD																																																	
UNK_140	YELLOW	Fit to 140:1-2																																																
	YELLOW	Short																																																
				<table><tr><td></td><td>Short</td><td>Open</td></tr><tr><td>141-B</td><td>LOAD</td><td>NO LOAD</td></tr><tr><td>PCB Ref:</td><td>SPKR_LOAD</td><td></td></tr></table>		Short	Open	141-B	LOAD	NO LOAD	PCB Ref:	SPKR_LOAD		<table><tr><td>UNK_141</td><td>YELLOW</td><td>Fit to 141:1-2</td></tr><tr><td></td><td>YELLOW</td><td>Short</td></tr></table>	UNK_141	YELLOW	Fit to 141:1-2		YELLOW	Short																														
	Short	Open																																																
141-B	LOAD	NO LOAD																																																
PCB Ref:	SPKR_LOAD																																																	
UNK_141	YELLOW	Fit to 141:1-2																																																
	YELLOW	Short																																																
				<table><tr><td></td><td>Short 1-2</td><td>Short 2-3</td></tr><tr><td>148-B</td><td>32R Load</td><td>16R Load</td></tr><tr><td>PCB Ref:</td><td>HP_1L_LOAD</td><td></td></tr></table>		Short 1-2	Short 2-3	148-B	32R Load	16R Load	PCB Ref:	HP_1L_LOAD		<table><tr><td>UNK_148</td><td>YELLOW</td><td>Fit to 148:1-2</td></tr><tr><td></td><td>YELLOW</td><td>1-2</td></tr></table>	UNK_148	YELLOW	Fit to 148:1-2		YELLOW	1-2																														
	Short 1-2	Short 2-3																																																
148-B	32R Load	16R Load																																																
PCB Ref:	HP_1L_LOAD																																																	
UNK_148	YELLOW	Fit to 148:1-2																																																
	YELLOW	1-2																																																
				<table><tr><td></td><td>Short 1-2</td><td>Short 2-3</td></tr><tr><td>142-B</td><td>32R Load</td><td>16R Load</td></tr><tr><td>PCB Ref:</td><td>HP_1R_LOAD</td><td></td></tr></table>		Short 1-2	Short 2-3	142-B	32R Load	16R Load	PCB Ref:	HP_1R_LOAD		<table><tr><td>UNK_142</td><td>YELLOW</td><td>Fit to 142:1-2</td></tr><tr><td></td><td>YELLOW</td><td>1-2</td></tr></table>	UNK_142	YELLOW	Fit to 142:1-2		YELLOW	1-2																														
	Short 1-2	Short 2-3																																																
142-B	32R Load	16R Load																																																
PCB Ref:	HP_1R_LOAD																																																	
UNK_142	YELLOW	Fit to 142:1-2																																																
	YELLOW	1-2																																																
				<table><tr><td></td><td>Short 1-2</td><td>Short 2-3</td></tr><tr><td>149-B</td><td>32R Load</td><td>16R Load</td></tr><tr><td>PCB Ref:</td><td>HP_2L_LOAD</td><td></td></tr></table>		Short 1-2	Short 2-3	149-B	32R Load	16R Load	PCB Ref:	HP_2L_LOAD		<table><tr><td>UNK_149</td><td>YELLOW</td><td>Fit to 149:1-2</td></tr><tr><td></td><td>YELLOW</td><td>1-2</td></tr></table>	UNK_149	YELLOW	Fit to 149:1-2		YELLOW	1-2																														
	Short 1-2	Short 2-3																																																
149-B	32R Load	16R Load																																																
PCB Ref:	HP_2L_LOAD																																																	
UNK_149	YELLOW	Fit to 149:1-2																																																
	YELLOW	1-2																																																
				<table><tr><td></td><td>Short 1-2</td><td>Short 2-3</td></tr><tr><td>143-B</td><td>32R Load</td><td>16R Load</td></tr><tr><td>PCB Ref:</td><td>HP_2R_LOAD</td><td></td></tr></table>		Short 1-2	Short 2-3	143-B	32R Load	16R Load	PCB Ref:	HP_2R_LOAD		<table><tr><td>UNK_143</td><td>YELLOW</td><td>Fit to 143:1-2</td></tr><tr><td></td><td>YELLOW</td><td>1-2</td></tr></table>	UNK_143	YELLOW	Fit to 143:1-2		YELLOW	1-2																														
	Short 1-2	Short 2-3																																																
143-B	32R Load	16R Load																																																
PCB Ref:	HP_2R_LOAD																																																	
UNK_143	YELLOW	Fit to 143:1-2																																																
	YELLOW	1-2																																																
				<table><tr><td></td><td>Short 1-2</td><td>Short 2-3</td></tr><tr><td>135-B</td><td>MIC INPUT IN1L</td><td>MIC INPUT IN2L</td></tr><tr><td>PCB Ref:</td><td>MIC INPUT SEL</td><td></td></tr></table>		Short 1-2	Short 2-3	135-B	MIC INPUT IN1L	MIC INPUT IN2L	PCB Ref:	MIC INPUT SEL		<table><tr><td>UNK_135</td><td>YELLOW</td><td>Fit to 135:1-2</td></tr><tr><td></td><td>YELLOW</td><td>1-2</td></tr></table>	UNK_135	YELLOW	Fit to 135:1-2		YELLOW	1-2	No Link																													
	Short 1-2	Short 2-3																																																
135-B	MIC INPUT IN1L	MIC INPUT IN2L																																																
PCB Ref:	MIC INPUT SEL																																																	
UNK_135	YELLOW	Fit to 135:1-2																																																
	YELLOW	1-2																																																
				<table><tr><td></td><td>Short 1-2</td><td>Short 2-3</td></tr><tr><td>130-B</td><td>DBVDD (DMIC)</td><td>MICBIAS (AMIC)</td></tr><tr><td>PCB Ref:</td><td>MIC supply</td><td></td></tr></table>		Short 1-2	Short 2-3	130-B	DBVDD (DMIC)	MICBIAS (AMIC)	PCB Ref:	MIC supply		<table><tr><td>UNK_130</td><td>YELLOW</td><td>Fit to 130:2-3</td></tr><tr><td></td><td>YELLOW</td><td>2-3</td></tr></table>	UNK_130	YELLOW	Fit to 130:2-3		YELLOW	2-3																														
	Short 1-2	Short 2-3																																																
130-B	DBVDD (DMIC)	MICBIAS (AMIC)																																																
PCB Ref:	MIC supply																																																	
UNK_130	YELLOW	Fit to 130:2-3																																																
	YELLOW	2-3																																																
				<table><tr><td></td><td>Short 1-2</td><td>Short 2-3</td></tr><tr><td>136-B</td><td>Electrical Input</td><td>Optical Input</td></tr><tr><td>PCB Ref:</td><td>S/PDIF_IN_SEL</td><td></td></tr></table>		Short 1-2	Short 2-3	136-B	Electrical Input	Optical Input	PCB Ref:	S/PDIF_IN_SEL		<table><tr><td>UNK_136</td><td>YELLOW</td><td>Fit to 136:1-2</td></tr><tr><td></td><td>YELLOW</td><td>1-2</td></tr></table>	UNK_136	YELLOW	Fit to 136:1-2		YELLOW	1-2																														
	Short 1-2	Short 2-3																																																
136-B	Electrical Input	Optical Input																																																
PCB Ref:	S/PDIF_IN_SEL																																																	
UNK_136	YELLOW	Fit to 136:1-2																																																
	YELLOW	1-2																																																
<table><tr><td></td><td>Short 1-2</td><td>Short 2-3</td></tr><tr><td>144-B</td><td>SPK_LP_PREFILT</td><td>SPK_LP_POSTFILT</td></tr><tr><td>PCB Ref:</td><td>SPK_LP_SEL</td><td></td></tr></table>		Short 1-2	Short 2-3	144-B	SPK_LP_PREFILT	SPK_LP_POSTFILT	PCB Ref:	SPK_LP_SEL		<table><tr><td>UNK_144</td><td>YELLOW</td><td>Fit to 144:1-2</td></tr><tr><td></td><td>YELLOW</td><td>1-2</td></tr></table>	UNK_144	YELLOW	Fit to 144:1-2		YELLOW	1-2																																		
	Short 1-2	Short 2-3																																																
144-B	SPK_LP_PREFILT	SPK_LP_POSTFILT																																																
PCB Ref:	SPK_LP_SEL																																																	
UNK_144	YELLOW	Fit to 144:1-2																																																
	YELLOW	1-2																																																
<table><tr><td></td><td>Short 1-2</td><td>Short 2-3</td></tr><tr><td>145-B</td><td>SPK_LN_PREFILT</td><td>SPK_LN_POSTFILT</td></tr><tr><td>PCB Ref:</td><td>SPK_LN_SEL</td><td></td></tr></table>		Short 1-2	Short 2-3	145-B	SPK_LN_PREFILT	SPK_LN_POSTFILT	PCB Ref:	SPK_LN_SEL		<table><tr><td>UNK_145</td><td>YELLOW</td><td>Fit to 145:1-2</td></tr><tr><td></td><td>YELLOW</td><td>1-2</td></tr></table>	UNK_145	YELLOW	Fit to 145:1-2		YELLOW	1-2																																		
	Short 1-2	Short 2-3																																																
145-B	SPK_LN_PREFILT	SPK_LN_POSTFILT																																																
PCB Ref:	SPK_LN_SEL																																																	
UNK_145	YELLOW	Fit to 145:1-2																																																
	YELLOW	1-2																																																
<table><tr><td></td><td>Short 1-2</td><td>Short 2-3</td></tr><tr><td>146-B</td><td>SPK_RP_PREFILT</td><td>SPK_RP_POSTFILT</td></tr><tr><td>PCB Ref:</td><td>SPK_RP_SEL</td><td></td></tr></table>		Short 1-2	Short 2-3	146-B	SPK_RP_PREFILT	SPK_RP_POSTFILT	PCB Ref:	SPK_RP_SEL		<table><tr><td>UNK_146</td><td>YELLOW</td><td>Fit to 146:1-2</td></tr><tr><td></td><td>YELLOW</td><td>1-2</td></tr></table>	UNK_146	YELLOW	Fit to 146:1-2		YELLOW	1-2																																		
	Short 1-2	Short 2-3																																																
146-B	SPK_RP_PREFILT	SPK_RP_POSTFILT																																																
PCB Ref:	SPK_RP_SEL																																																	
UNK_146	YELLOW	Fit to 146:1-2																																																
	YELLOW	1-2																																																
<table><tr><td></td><td>Short 1-2</td><td>Short 2-3</td></tr><tr><td>147-B</td><td>SPK_RN_PREFILT</td><td>SPK_RN_POSTFILT</td></tr><tr><td>PCB Ref:</td><td>SPK_RN_SEL</td><td></td></tr></table>		Short 1-2	Short 2-3	147-B	SPK_RN_PREFILT	SPK_RN_POSTFILT	PCB Ref:	SPK_RN_SEL		<table><tr><td>UNK_147</td><td>YELLOW</td><td>Fit to 147:1-2</td></tr><tr><td></td><td>YELLOW</td><td>1-2</td></tr></table>	UNK_147	YELLOW	Fit to 147:1-2		YELLOW	1-2																																		
	Short 1-2	Short 2-3																																																
147-B	SPK_RN_PREFILT	SPK_RN_POSTFILT																																																
PCB Ref:	SPK_RN_SEL																																																	
UNK_147	YELLOW	Fit to 147:1-2																																																
	YELLOW	1-2																																																
				<table><tr><td></td><td>Short</td><td>Open</td></tr><tr><td>127-B</td><td>SDDUT (3-wire mode)</td><td>GPIO2</td></tr><tr><td>PCB Ref:</td><td>GPIO2 FUNCTION SELECT</td><td></td></tr></table>		Short	Open	127-B	SDDUT (3-wire mode)	GPIO2	PCB Ref:	GPIO2 FUNCTION SELECT		<table><tr><td>UNK_127</td><td>YELLOW</td><td>Fit to 127:1-2</td></tr><tr><td></td><td>YELLOW</td><td>1-2</td></tr></table>	UNK_127	YELLOW	Fit to 127:1-2		YELLOW	1-2																														
	Short	Open																																																
127-B	SDDUT (3-wire mode)	GPIO2																																																
PCB Ref:	GPIO2 FUNCTION SELECT																																																	
UNK_127	YELLOW	Fit to 127:1-2																																																
	YELLOW	1-2																																																
				<table><tr><td></td><td>Short</td><td>Open</td></tr><tr><td>129-B</td><td>DMIC CLK</td><td>GPIO5</td></tr><tr><td>PCB Ref:</td><td>GPIO5 FUNCTION SELECT</td><td></td></tr></table>		Short	Open	129-B	DMIC CLK	GPIO5	PCB Ref:	GPIO5 FUNCTION SELECT		<table><tr><td>UNK_129</td><td>YELLOW</td><td>Fit to 129:1-2</td></tr><tr><td></td><td>YELLOW</td><td>1-2</td></tr></table>	UNK_129	YELLOW	Fit to 129:1-2		YELLOW	1-2	Open																													
	Short	Open																																																
129-B	DMIC CLK	GPIO5																																																
PCB Ref:	GPIO5 FUNCTION SELECT																																																	
UNK_129	YELLOW	Fit to 129:1-2																																																
	YELLOW	1-2																																																
				<table><tr><td></td><td>Short 1-2</td><td>Short 2-3</td></tr><tr><td>131-B</td><td>DMIC DAT</td><td>CSB (4-wire mode)</td></tr><tr><td>PCB Ref:</td><td>GPIO6 FUNCTION SELECT</td><td></td></tr></table>		Short 1-2	Short 2-3	131-B	DMIC DAT	CSB (4-wire mode)	PCB Ref:	GPIO6 FUNCTION SELECT		<table><tr><td>UNK_131</td><td>YELLOW</td><td>Fit to 131:2-3</td></tr><tr><td></td><td>YELLOW</td><td>1-2</td></tr></table>	UNK_131	YELLOW	Fit to 131:2-3		YELLOW	1-2																														
	Short 1-2	Short 2-3																																																
131-B	DMIC DAT	CSB (4-wire mode)																																																
PCB Ref:	GPIO6 FUNCTION SELECT																																																	
UNK_131	YELLOW	Fit to 131:2-3																																																
	YELLOW	1-2																																																
				<table><tr><td></td><td>Short 1-2</td><td>Short 2-3</td></tr><tr><td>128-B</td><td>3-wire Mode</td><td>Software Controlled</td></tr><tr><td>PCB Ref:</td><td>CIFMODE</td><td></td></tr></table>		Short 1-2	Short 2-3	128-B	3-wire Mode	Software Controlled	PCB Ref:	CIFMODE		<table><tr><td>UNK_128</td><td>YELLOW</td><td>Fit to 128:2-3</td></tr><tr><td></td><td>YELLOW</td><td>1-2</td></tr></table>	UNK_128	YELLOW	Fit to 128:2-3		YELLOW	1-2																														
	Short 1-2	Short 2-3																																																
128-B	3-wire Mode	Software Controlled																																																
PCB Ref:	CIFMODE																																																	
UNK_128	YELLOW	Fit to 128:2-3																																																
	YELLOW	1-2																																																

BILL OF MATERIALS (BOM)

<i>Item</i>	<i>RefDes</i>	<i>Description</i>	<i>Manufacturer</i>	<i>Manufacturer's Part Number</i>
1	L4 L5	10uH Shielded SM Power 1.1A Inductor ' LPS4018 series'	Coilcraft	LPS4018-103ML
2	MSC1	Grip Seal Bag, 90x115mm	CPC	PA123
3	U13	74ALVC164245 16 Bit Dual Supply Bus Transceiver SSO	Philips	74ALVC164245DL
4	U6	USB Streaming Controller	Texas Instruments	TAS1020BPFB
5	C58	220nF 0603 SMD Ceramic Capacitor 10V X7R	MuRata	GRM188R71A224KA01D
6	C57 C59 C61	10uF 0603 SMD Ceramic Capacitor 6.3V X5R	MuRata	GRM188R60J106ME47D
7	U8	74VHC157 Quad 2-Input Mux SO	Fairchild Semiconductor	74VHC157MX
8	C25 C27	27pF 0603 SMD Ceramic Capacitor 50V NPO	Panasonic	ECJ-1VC1H270J
9	J38	Phono Socket PCB mount YELLOW	Dragon City	RS109 - Yellow
10	J50 J51 J52 J53	4mm Gold Plated Non-Insulated Binding Post - Red	ESR	070-251
11	H5	2x8 2.54mm pitch PCB Pin Header VERTICAL	Harwin	M20-9980845
12	H6	2x10 2.54mm pitch PCB Pin Header VERTICAL	Harwin	M20-9981045
13	H7 J20 J21 J22 J23 J24 J25 J26 J27 J29 J40 J41	1x2 PCB Pin Header 0.1" VERTICAL	Harwin	M20-9990245
14	J11 J12 J13 J14 J15 J16 J17 J18 J28 J30 J31 J35 J36 J42 J43 J44 J45 J46 J47 J48 J49	1x3 2.54mm Header Vertical	Harwin	M20-9990345
15	Q4	BC847BS NPN Dual Bipolar Transistor SOT363	Philips	BC847BS
16	J32	USB receptacle Type B	FCI	61729-0010BLF
17	MECH1	IC Socket DIL 8 WAY	Multicomp	2227MC-08-03-F1
18	PS1 PS2 PS3 PS4 PS5 PS6	0.35A Poly Switch 1210	Tyco	MICROSMD035F-2
19	L1 L2	300R 0805 BMB2A Ferrite Bead	Meggitt	BMB2A0300AN1
20	L3	47uH 1210 Surface Mount Inductor 'PA series'	Panasonic	ELJPA470KF
21	U12	TORX147PL Digital Audio Fiber Optic Receiver	Toshiba	TORX147PL
22	U10	Fiber Optic Transmitting Module for Digital Audio Interface	Toshiba	TOTX147PL
23	SC101 SC102 SC103 SC104 SC106 SC107 SC108 SC109	Slotted Panhead Screw - M3 thread; 12mm long	TR Fasteners	M312 PSSTMCZ100-

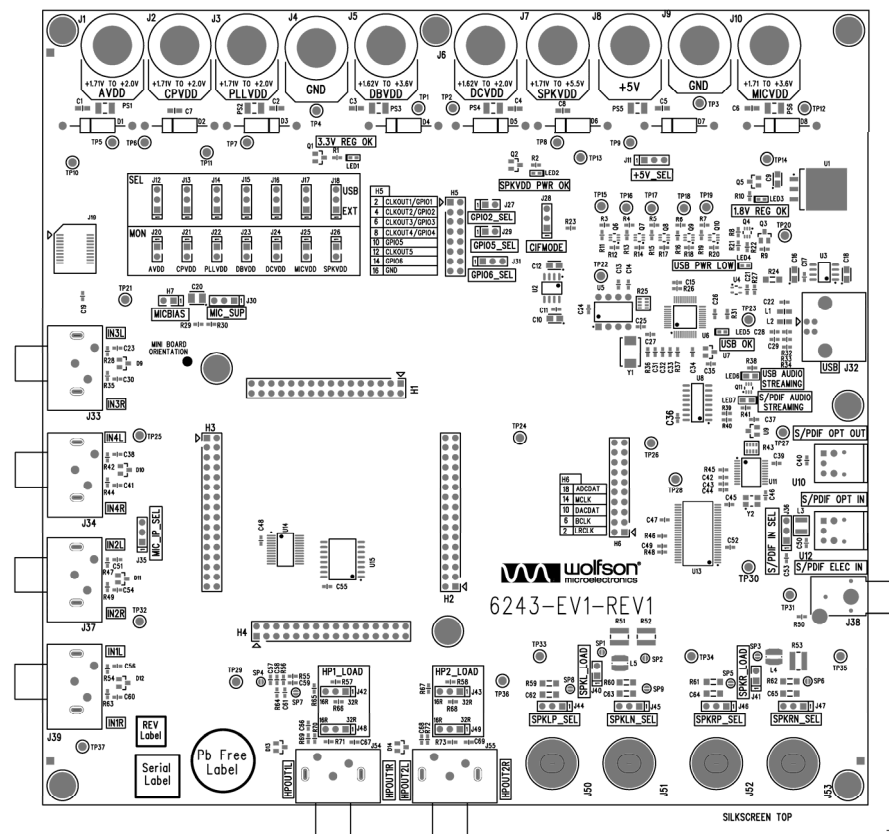
Item	RefDes	Description	Manufacturer	Manufacturer's Part Number
24	W101 W102 W103 W104 W106 W107 W108 W109	Plain M3 size washer	TR Fasteners	M3-FABRWAN100-
25	C9 C10 C12 C16 C18	10uF 10V SMD Tantalum Capacitor case A	Kemet	T491A106K010AT
26	C19 C23 C30 C38 C41 C51 C54 C56 C60	1uF 0603 SMD Ceramic Capacitor 16V X7R	Phycomp	225524615663
27	Q6 Q7 Q8 Q9 Q10 Q11	Si1902DL N- Channel Dual MOSFET SC-70	Vishay	SI1902DL-T1-E3
28	MISC2	Lead-free label, 15mm round	Pro Power	7827260
29	C20	22uF 10V SMD Tantalum Capacitor Case B	AVX	TAJB226K010R
30	R24	1R50 1206 SMD chip resistor 5% 0.25W	Vishay	2312 1551 1508
31	C11 C15 C17 C21 C24 C26 C33 C34 C35 C36 C37 C40 C42 C43 C45 C47 C48 C49 C50 C52 C53 C55	0.1uF 0603 SMD Ceramic Capacitor 16V X7R	Phycomp	2238 786 15649
32	C28 C29	47pF 0603 SMD Ceramic Capacitor 50V NPO	AVX	06035A470JAT2A
33	C13 C14 C66 C67 C68 C69	220pF 0603 SMD Ceramic Capacitor 50V NPO	AVX	06035A221JAT2A
34	P101 P102 P103 P104 P106 P107 P108 P109	Hexagonal brass M3 size spacer 20mm length	Harwin	R6379-02
35	C44 C46	22pF 0603 SMD Ceramic Capacitor 50V NPO	Phycomp	2238 867 15229
36	C22	0.01uF 0603 SMD Ceramic Capacitor 50V X7R	Phycomp	2238 586 15636
37	LED1 LED2 LED3 LED5	KP-1608MGC 0603 SMD Chip LED GREEN	Kingbright	KP-1608MGC
38	LED4	KP-1608SURC 0603 SMD Chip LED RED	Kingbright	KP-1608SURC
39	TP10 TP11 TP13 TP20 TP21 TP22 TP23 TP24 TP25 TP26 TP27 TP28 TP29 TP30 TP31 TP32 TP33 TP34 TP35 TP36 TP37	1.32mm PCB Test Terminal BLACK	Vero	20-2136
40	TP14	1.32mm PCB Test Terminal RED	Vero	20-313141
41	C62 C63 C64 C65	22nF 1206 SMD Ceramic Capacitor 50V COG	MuRata	GRM3195C1H223JA01D
42	C1 C2 C3 C4 C5 C6 C7 C8	4.7uF 0805 SMD Ceramic Capacitor 16V X5R	Kemet	C0805C475K4PAC
43	R25	10K 1206 SMD chip 4 resistor array 5% 0.063W	Phycomp	2350 03510 103
44	R43	47k 1206 SMD chip 4 resistor array 5% 0.063W	Phycomp	2350 035 10473
45	R51 R52 R53	8R2 1218 SMD chip resistor 1% 1W	Phycomp	2322 7357 8208
46	R8 R12 R14 R17 R18 R20 R22 R45	10k 0603 SMD chip resistor 1% 0.063W	Multicomp	MC 0.063W 0603 1% 10K

<i>Item</i>	<i>RefDes</i>	<i>Description</i>	<i>Manufacturer</i>	<i>Manufacturer's Part Number</i>
47	R9 R21	100K 0603 SMD chip resistor 1% 0.063W	Multicomp	MC 0.063W 0603 1% 100K
48	R31	1K1 0603 SMD chip resistor 1% 0.1W	Multicomp	MC 0.063W 0603 1% 1K1
49	R34	1k5 0603 SMD chip resistor 1% 0.063W	Multicomp	MC 0.063W 0603 1% 1K5
50	R57 R58 R66 R68 R70 R71 R72 R73	16R 0603 SMD chip resistor 1% 0.063W	Multicomp	MC 0.063W 0603 1% 16R
51	R27	2K4 0603 SMD chip resistor 1% 0.063W	Multicomp	MC 0.063W 0603 1% 2K4
52	R32 R33	27R 0603 SMD chip resistor 1% 0.063W	Multicomp	MC 0.063W 0603 1% 27R
53	R36	3K0 0603 SMD chip resistor 1% 0.063W	Multicomp	MC 0.063W 0603 1% 3K
54	R46 R48	33R 0603 SMD chip resistor 1% 0.063W	Multicomp	MC 0.063W 0603 1% 33R
55	R11 R13 R15 R16 R19 R23 R55	4K7 0603 SMD chip resistor 1% 0.063W	Multicomp	MC 0.063W 0603 1% 4K7
56	R26 R28 R35 R37 R42 R44 R47 R49 R54 R63	47K 0603 SMD chip resistor 1% 0.063W	Multicomp	MC 0.063W 0603 1% 47K
57	R50	75R 0603 SMD chip resistor 1% 0.063W	Multicomp	MC 0.063W 0603 1% 75R
58	R3 R4 R5 R6 R7 R29 R30 R40 R65 R67 R69	0R 0603 SMD chip resistor 1% 0.063W	Multicomp	MC 0.063W 0603 0R
59	R59 R60 R61 R62	220R 1206 SMD chip resistor 1% 0.125W	Multicomp	MC 0.125W 1206 1% 220R
60	C32	100pF 0603 SMD Ceramic Capacitor 50V NPO	Multicomp	U0603C101JCT
61	C31	1000pF 0603 SMD Ceramic Capacitor 50V NPO	Multicomp	U0603C102JCT
62	U1	1.5A low dropout positive regulator - 1.8V fixed	National Semiconductor	LM1086IS-1.8
63	Q3	P-Channel MOSFET 60v, Rds(on) = 0.17R - SOT23	Vishay	SI2309DS
64	D1 D2 D3 D4 D5 D8	1N5337B 4.7V 5W Zener Diode PTH	ON Semiconductor	1N5337BG
65	D6 D7	1N5341B 6.2V 5W Zener Diode PTH	ON Semiconductor	1N5341BG
66	U7 U9	DS1818 3.3V active-low Power-On-Reset chip SOT	Dallas Semiconductor	DS1818R-10+
67	U2 U3	KF33BD Very Low Drop +3.3V Voltage Regulator SO	ST Microelectronics	KF33BD
68	U5	EEPROM 8x8 i2c interface - with Wolfson "Standard" code	Microchip Technology	24LC64-I/P
69	Q1 Q2 Q5	BSS138 N-Channel enhancement Mode FET	Fairchild Semiconductor	BSS138
70	Y2	XTAL 12MHz 16pF SM GSX-433 Series	Golledge	GSX-433/111DF 12MHz
71	Y1	6.0MHz GSX-752A/351JF SM Crystal 30pF	Golledge	GSX-752A/351JF 6.0MHz

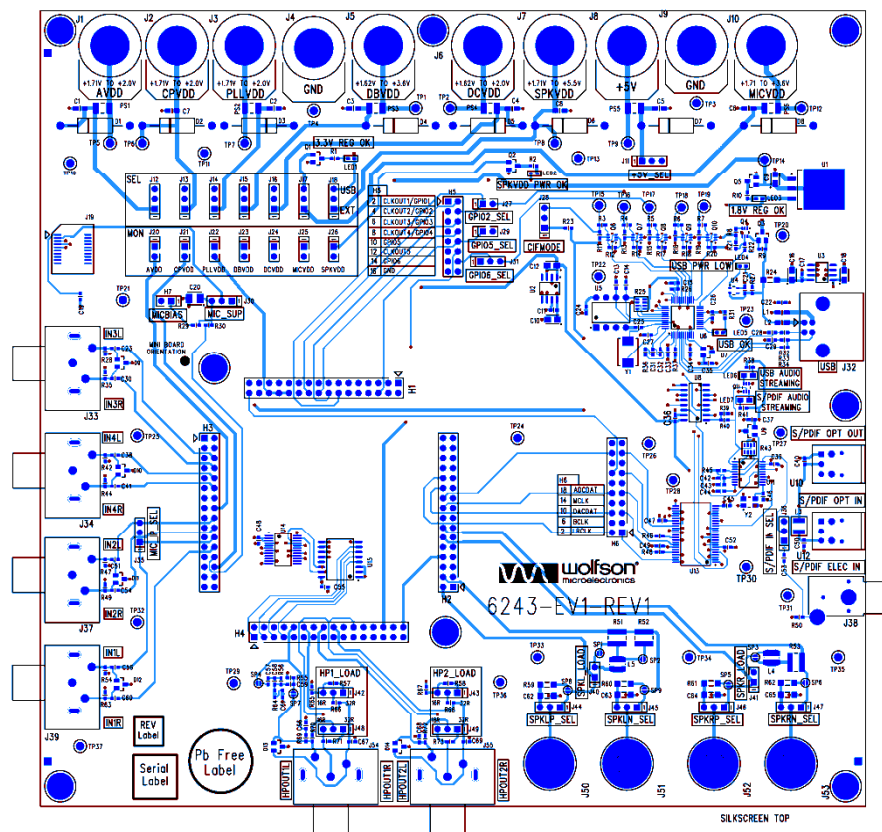
Item	RefDes	Description	Manufacturer	Manufacturer's Part Number
72	SP5 SP6 SP8 SP9	Surface mount shorting point	N/A	N/A
73	J1 J2 J3 J4 J5 J6 J7 J8 J9 J10	4mm Non-Insulated Panel Socket 16A	PJP	3110I
74	J33 J34 J37 J39 J54 J55	Phono Socket PCB mount Pair Red/White	Rapid	20-1290
75	LNK_J11 LNK_J12 LNK_J13 LNK_J14 LNK_J15 LNK_J16 LNK_J17 LNK_J18 LNK_J20 LNK_J21 LNK_J22 LNK_J23 LNK_J24 LNK_J25 LNK_J26	0.1" OPEN JUMPER LINK RED	Protech	22-3565
76	LNK1901 LNK1902 LNK1906 LNK1908 LNK1919 LNK1924 LNK1926 LNK1936 LNK2260 LNK2261 LNK2606 LNK2701 LNK2702 LNK2705 LNK2706 LNK_H6- 5 LNK_H6-4 LNK_H6-3 LNK_H6-2 LNK_H6-1 LNK_J28 LNK_J30 LNK_J31 LNK_J36 LNK_J40 LNK_J41 LNK_J42 LNK_J43 LNK_J44 LNK_J45 LNK_J46 LN	0.1" OPEN JUMPER LINK YELLOW	Protech	22-3570
77	R56 R64	1k 0603 SMD chip resistor 1% 0.063W	TruOhm	72-9326
78	R1 R2 R10 R38 R41	470R 0603 SMD chip resistor 1% 0.063W	Tyco	01622949-1
79	LED6 LED7	KP-2012MGC 0805 SMD Chip LED GREEN	Kingbright	KP-2012MGC
80	U15	PCA9554D I2C I/O Expander	Philips	PCA9554D
81	C39	1uF 0603 SMD Ceramic Capacitor 6.3V X5R	MuRata	GRM188R60J105KA01D
82	U14	PCA9555DB I2C I/O Expander	NXP	483-7216
83	J19	2x10 way socket, mates with edge connector on 0.062" thick PCB	Samtec	MEC8-110-02-L-DV
84	H1 H2 H3 H4	2x16 2.54mm pitch PCB Pin Header VERTICAL	Toby	THD-16-R
85	U4	XC61C Low Power Consumption Voltage Detector	Torex	XC61CN4402NRN
86	PCB1	PCB	Kelan Circuits Ltd	6243-EV1-REV1

<i>Item</i>	<i>RefDes</i>	<i>Description</i>	<i>Manufacturer</i>	<i>Manufacturer's Part Number</i>
87	U11	WM8804 1:1 Digital Interface Transceiver with PLL	Wolfson Microelectronics	WM8804GEDS
Unpop				
88	TP15 TP16 TP17 TP18 TP19	1.32mm PCB Test Terminal RED	Vero	20-313141
89	D9 D10 D11 D12 D13 D14	TVS Diode PESD5V0S2BT V _{rw} m=5V dual ESD Protection SOT23	Philips	PESD5V0S2BT
90	R39	0R 0603 SMD chip resistor 1% 0.063W	Multicomp	MC 0.063W 0603 0R
91	SP1 SP2 SP3 SP4 SP7	Surface mount shorting point	N/A	N/A
92	TP1 TP2 TP3 TP4 TP5 TP6 TP7 TP8 TP9 TP12	1.32mm off-board connection point	N/A	N/A

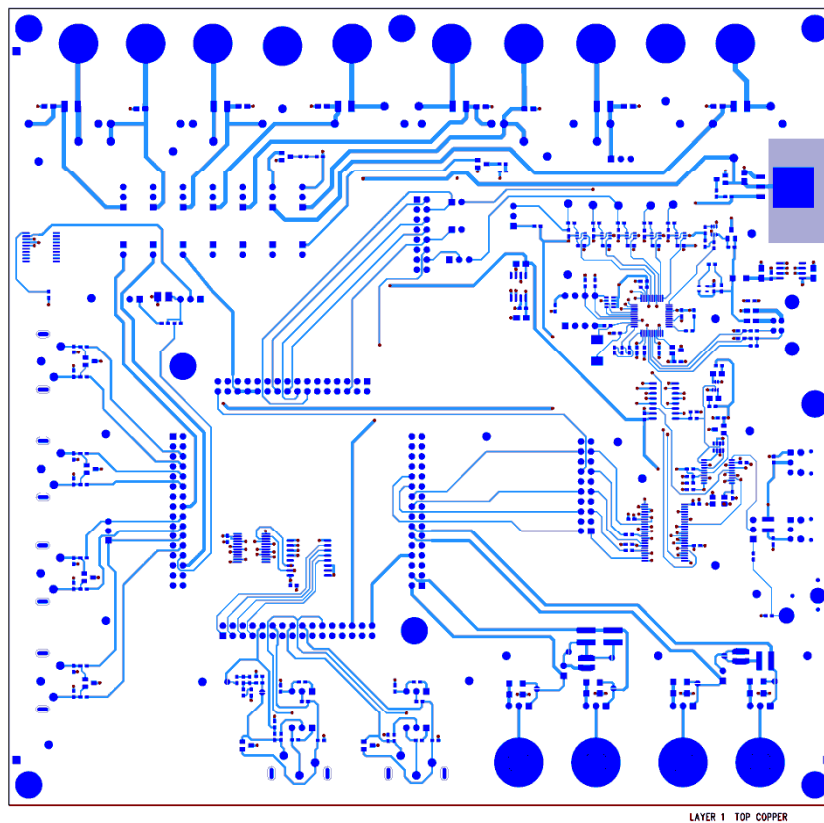
PCB LAYOUT



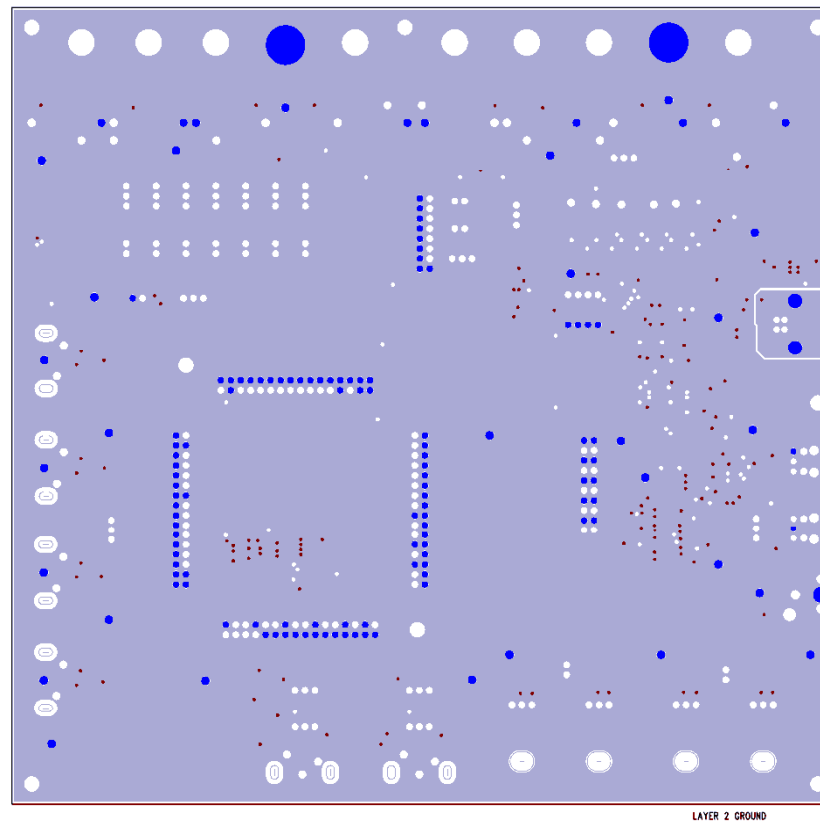
Top Layer: Overview



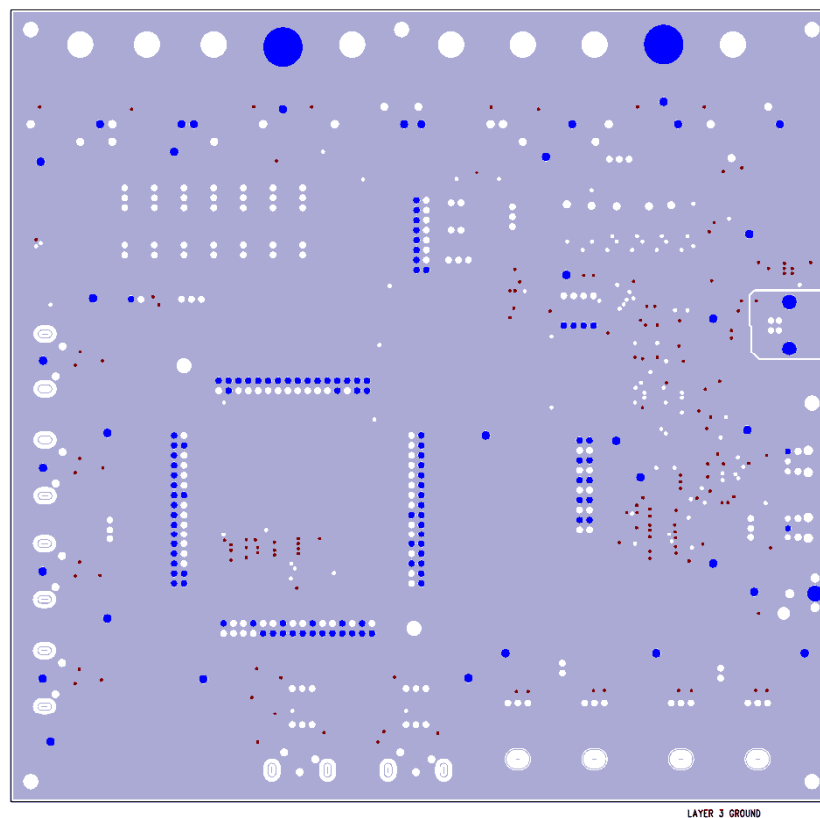
Top Layer: Silkscreen + Copper



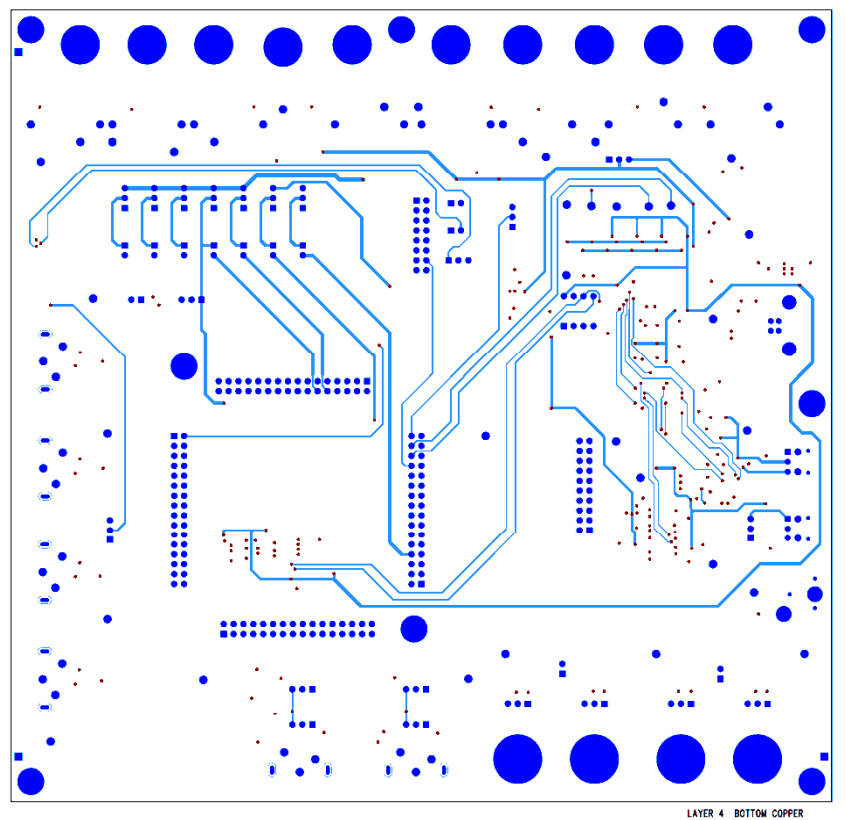
Top Layer: Copper



Layer 2: Copper



Layer 3: Copper



LAYER 4 BOTTOM COPPER

Bottom Layer: Copper

USB Power Selected

Insert MIC daughtercard facing outwards

S/PDIF Clocks and Data

USB

S/PDIF Digital Output (Optical connection)

S/PDIF Digital Input (Optical connection)

S/PDIF Digital input (Electrical connection)

8Ω Speakers Load Selected

16Ω Headphones Load Selected

Headphones Output

Left Class D Speaker Output

Right Class D Speaker Output

TECHNICAL SUPPORT

If you require more information or require technical support, please contact the nearest Wolfson Microelectronics regional office:

<http://www.wolfsonmicro.com/contact>

or one of our global distributors:

<http://www.wolfsonmicro.com/distribution>

IMPORTANT NOTICE

Wolfson Microelectronics plc ("Wolfson") products and services are sold subject to Wolfson's terms and conditions of sale, delivery and payment supplied at the time of order acknowledgement.

Wolfson warrants performance of its products to the specifications in effect at the date of shipment. Wolfson reserves the right to make changes to its products and specifications or to discontinue any product or service without notice. Customers should therefore obtain the latest version of relevant information from Wolfson to verify that the information is current.

Testing and other quality control techniques are utilised to the extent Wolfson deems necessary to support its warranty. Specific testing of all parameters of each device is not necessarily performed unless required by law or regulation.

In order to minimise risks associated with customer applications, the customer must use adequate design and operating safeguards to minimise inherent or procedural hazards. Wolfson is not liable for applications assistance or customer product design. The customer is solely responsible for its selection and use of Wolfson products. Wolfson is not liable for such selection or use nor for use of any circuitry other than circuitry entirely embodied in a Wolfson product.

Wolfson's products are not intended for use in life support systems, appliances, nuclear systems or systems where malfunction can reasonably be expected to result in personal injury, death or severe property or environmental damage. Any use of products by the customer for such purposes is at the customer's own risk.

Wolfson does not grant any licence (express or implied) under any patent right, copyright, mask work right or other intellectual property right of Wolfson covering or relating to any combination, machine, or process in which its products or services might be or are used. Any provision or publication of any third party's products or services does not constitute Wolfson's approval, licence, warranty or endorsement thereof. Any third party trade marks contained in this document belong to the respective third party owner.

Reproduction of information from Wolfson datasheets is permissible only if reproduction is without alteration and is accompanied by all associated copyright, proprietary and other notices (including this notice) and conditions. Wolfson is not liable for any unauthorised alteration of such information or for any reliance placed thereon.

Any representations made, warranties given, and/or liabilities accepted by any person which differ from those contained in this datasheet or in Wolfson's standard terms and conditions of sale, delivery and payment are made, given and/or accepted at that person's own risk. Wolfson is not liable for any such representations, warranties or liabilities or for any reliance placed thereon by any person.

ADDRESS:

Wolfson Microelectronics plc
Westfield House
26 Westfield Road
Edinburgh
EH11 2QB
United Kingdom
Tel :: +44 (0)131 272 7000
Fax :: +44 (0)131 272 7001
Email :: apps@wolfsonmicro.com