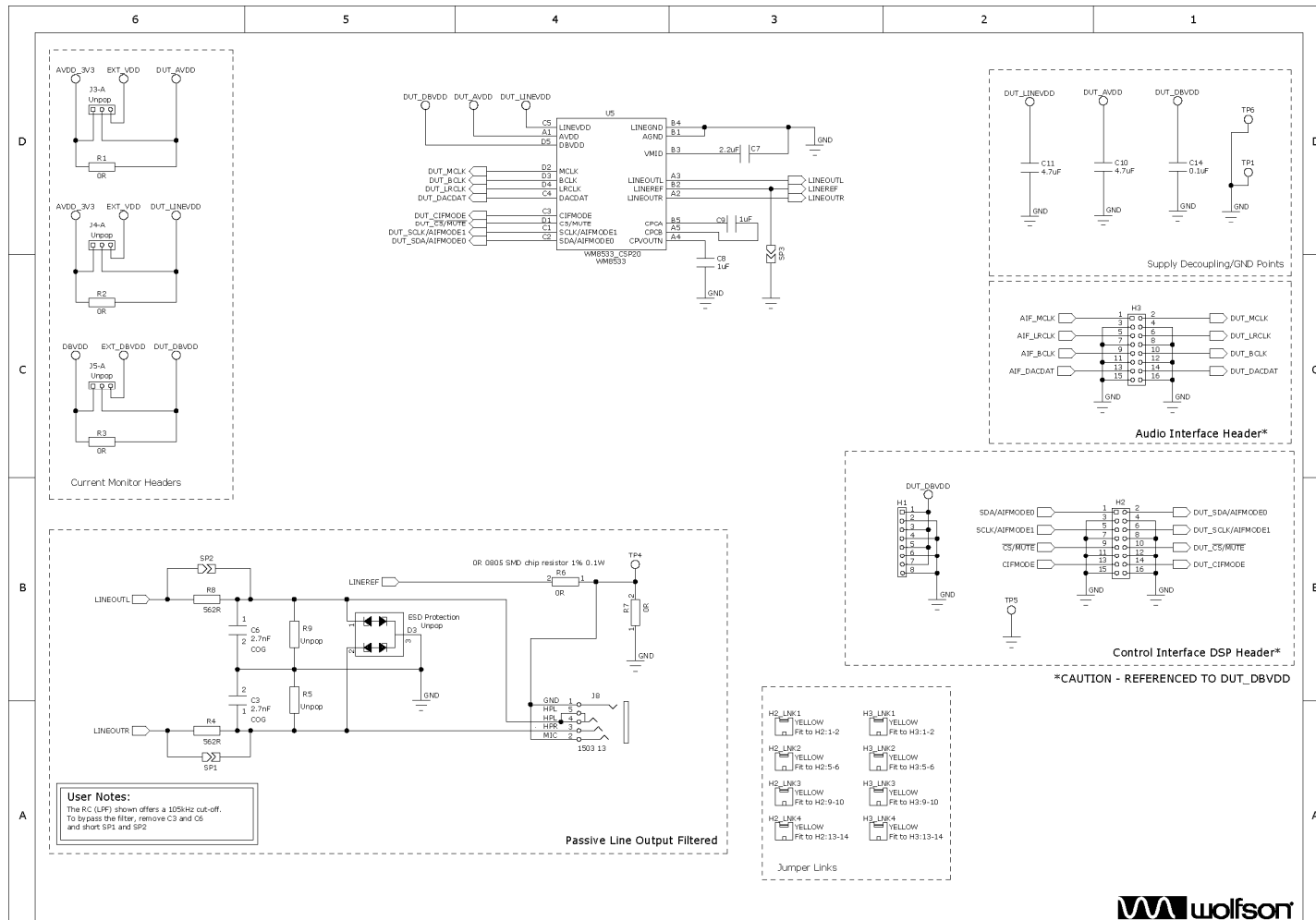


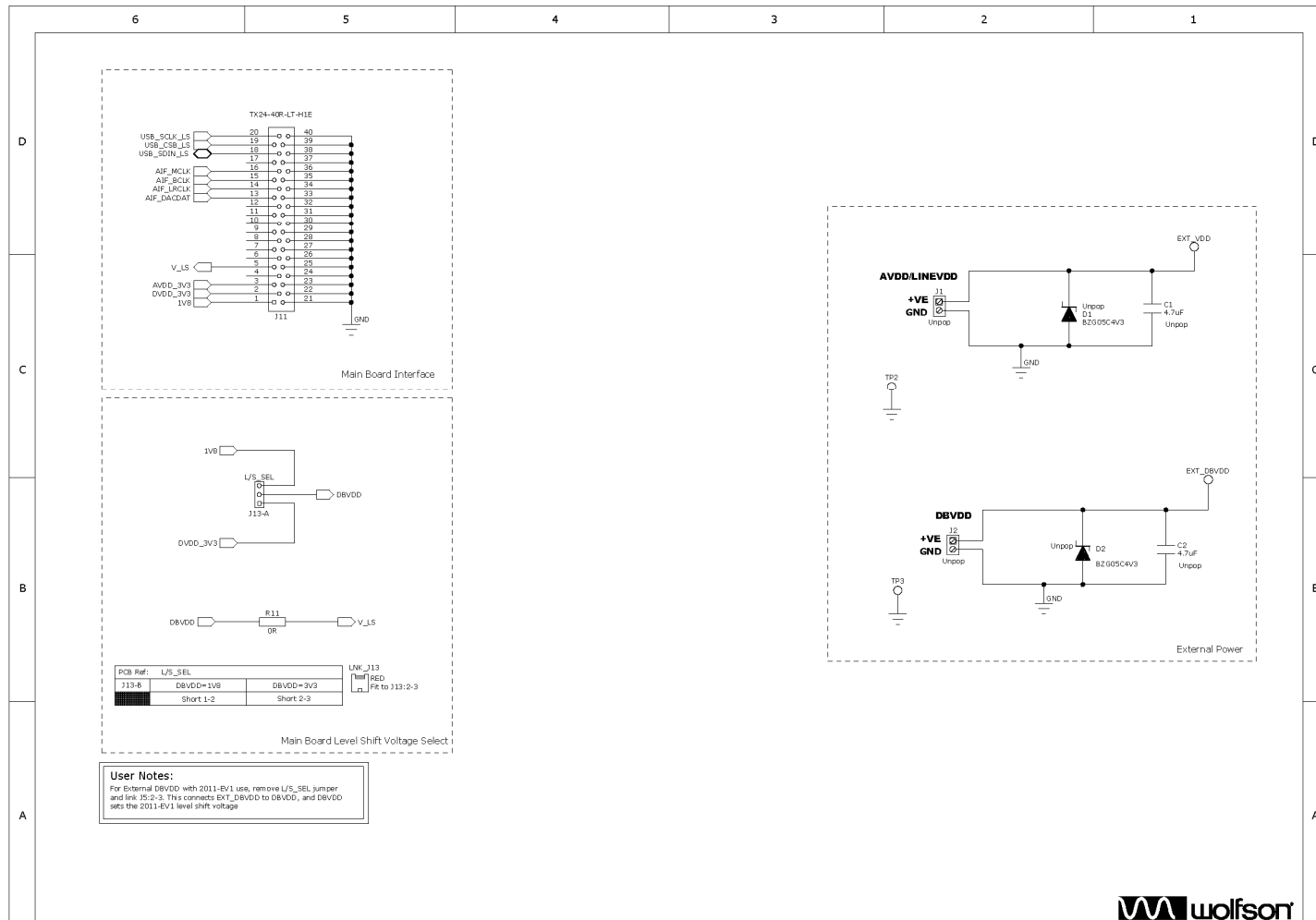
DOC TYPE:	SCHEMATIC AND LAYOUT
BOARD REFERENCE:	WM8533-2011-CS20-M-REV2
BOARD TYPE:	Customer Mini Board
WOLFSON DEVICE(S):	WM8533
DATE:	November 2011
DOC REVISION:	Rev1.0

SCHEMATIC

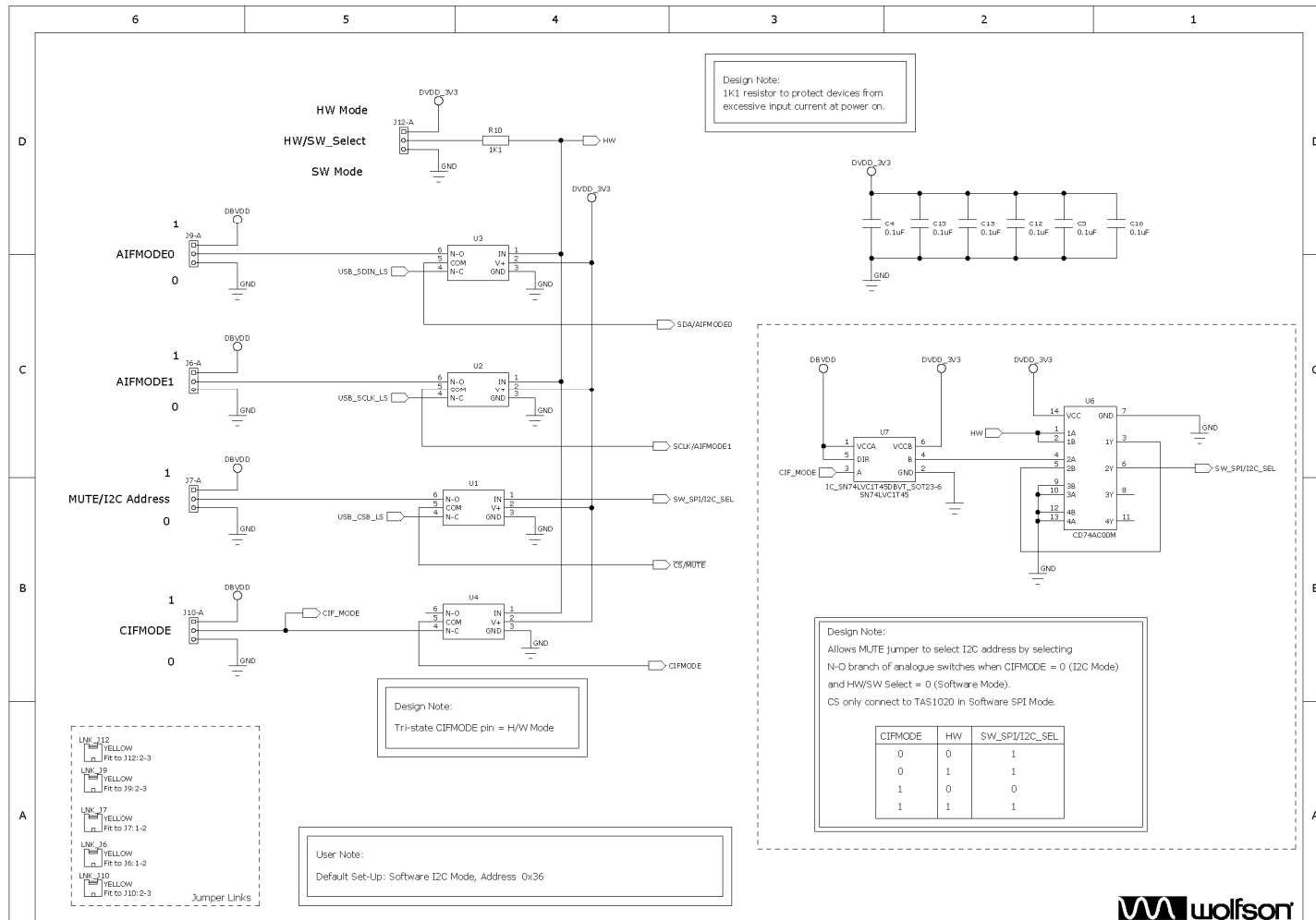
Sheet 1: WM8533



Sheet 2: Interconnect



Sheet 3: Hardware / Software Select



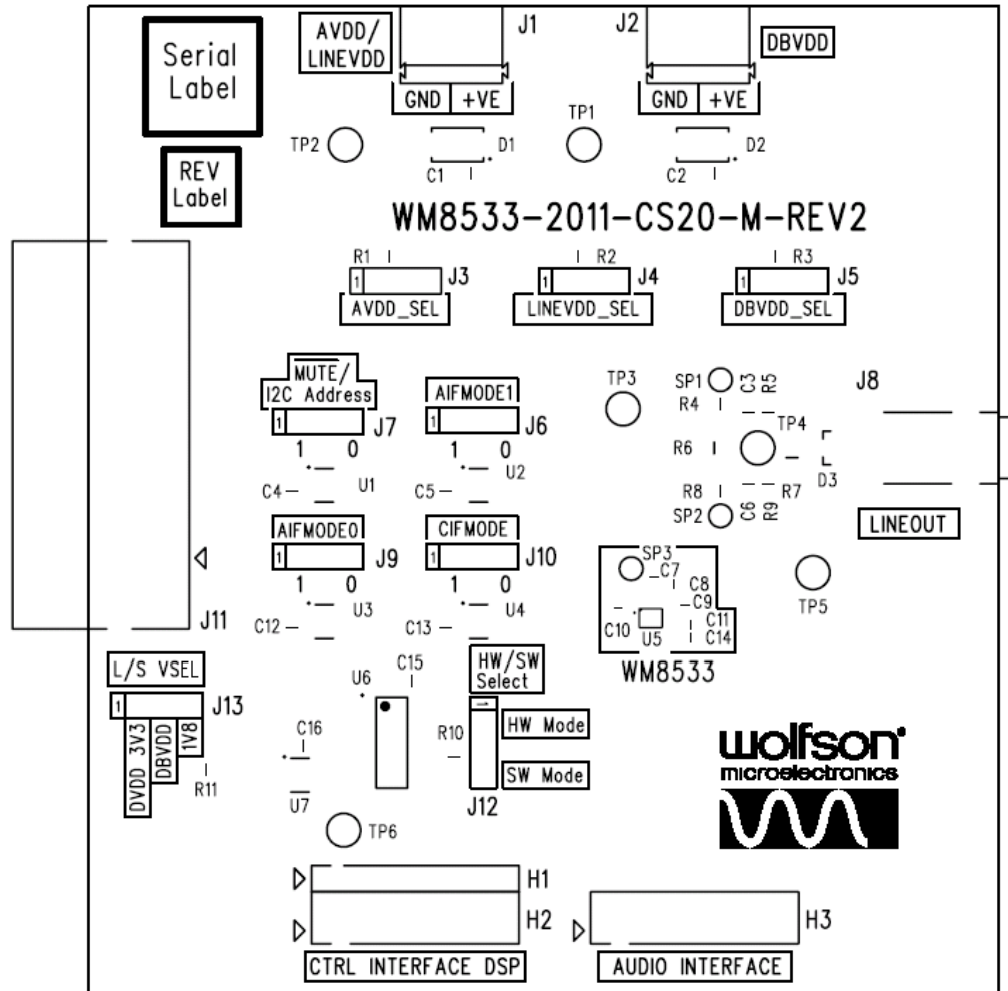
BILL OF MATERIALS (BOM)

<i>Item</i>	<i>RefDes</i>	<i>Description</i>	<i>Manufacturer</i>	<i>Manufacturer's Part Number</i>
1	C3 C6	2.7nF 0603 SMD Ceramic Capacitor 50V COG	Murata	GRM1885C1H272JA01D
2	C8 C9	1uF 0402 SMD Ceramic Capacitor 10V X5R	MuRata	GRM155R61A105KE15D
3	H2 H3	2x8 2.54mm pitch PCB Pin Header VERTICAL	Harwin	M20-9980845
4	J6 J7 J9 J10 J12 J13	1x3 2.54mm Header Vertical	Harwin	M20-9990345
5	H1	1x8 2.54mm pitch PCB Pin Header VERTICAL	Harwin	M20-9990845
6	U6	Quad 2 I/P NAND Gate	Texas Instruments	CD74AC00M
7	MECH2	Feet black 12.7sq self-adhesive	3M	SJ5018BLACK
8	R4 R8	562R 0603 SMD chip resistor 1% 0.063W	Multicomp	MC 0.063W 0603 1% 562R
9	C7	2.2uF 0402 SMD Ceramic Capacitor 6.3V X5R	Kemet	C0402C225M9PAC
10	U1 U2 U3 U4	Low Voltage Single Supply Analog Switch	Analog Devices	ADG719BRTZ-500RL7
11	J8	4 Pole 3.5mm SM Jack Socket Lumberg	Lumberg	1503 13 VP3
12	U7	SINGLE-BIT DUAL-SUPPLY BUS TRANSCEIVER with Configurable Voltage Translation and 3-State outputs	Texas Instruments	SN74LVC1T45DBVT
13	J11	40 Way 1.27mm Pitch TX24 Series JAE Right Angle Socket	JAE	TX24-40R-LT-H1E
14	MISC2	Lead-free label, 15mm round	Pro Power	7827260
15	C10 C11	4.7uF 0402 SMD Ceramic Capacitor 6.3V X5R	TAIYO YUDEN	JMK105BBJ475MV-F
16	C4 C5 C12 C13 C15 C16	0.1uF 0603 SMD Ceramic Capacitor 16V X7R	Phycomp	2238 786 15649
17	C14	0.1uF 0402 SMD Ceramic Capacitor 16V X7R	MuRata	GRM155R71C104KA88D
18	R10	1K1 0603 SMD chip resistor 1% 0.1W	Multicomp	MC 0.063W 0603 1% 1K1
19	R1 R2 R3 R11	0R 0603 SMD chip resistor 1% 0.063W	Multicomp	MC 0.063W 0603 0R
20	R6 R7	0R 0805 SMD chip resistor 1% 0.1W	Multicomp	MC 0.1W 0805 0R
21	LNK_J13	0.1" OPEN JUMPER LINK RED	Protech	22-3565
22	H3_LNK1 H2_LNK1 H3_LNK2 H2_LNK2 H3_LNK3 H2_LNK3 H3_LNK4 H2_LNK4 LNK_J6 LNK_J7 LNK_J9 LNK_J10 LNK_J12	0.1" OPEN JUMPER LINK YELLOW	Protech	22-3570
23	U5	WM8533 24-bit 192kHz Stereo DAC with 2Vrms Ground Referenced Line Output	Wolfson Microelectronics plc	WM8533ECSN
24	PCB1	PCB	Exception PCB	WM8533-2011-CS20-M-REV2

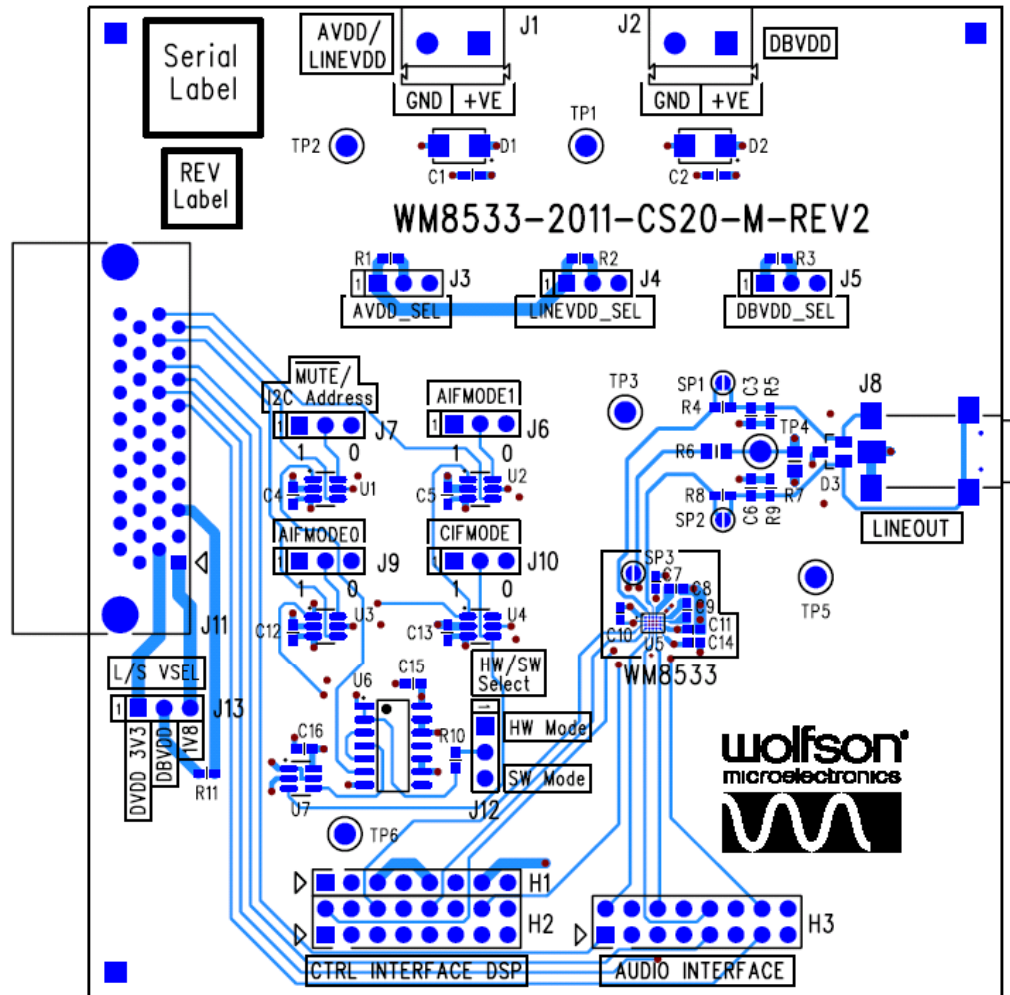
Unpop

<i>Item</i>	<i>RefDes</i>	<i>Description</i>	<i>Manufacturer</i>	<i>Manufacturer's Part Number</i>
25	C1 C2	4.7uF 0603 SMD Ceramic Capacitor 6.3V X5R	MuRata	GRM188R60J475KE19D
26	J3 J4 J5	1x3 2.54mm Header Vertical	Harwin	M20-9990345
27	R5 R9	562R 0603 SMD chip resistor 1% 0.063W	Multicomp	MC 0.063W 0603 1% 562R
28	J1 J2	PCB mount 1X2 terminal block for 2.5mm wire gauge	LUMBERG	KRM 02
29	D3	TVS Diode PESD5V0S2BT Vrwm=5V dual ESD Protection SOT23	Philips	PESD5V0S2BT
30	D1 D2	BZG05C 6.2V 3W Zener Diode SMD	VISHAY	BZG05C6V2TR3
31	SP1 SP2 SP3	Surface mount shorting point	N/A	N/A
32	TP1 TP2 TP3 TP4 TP5 TP6	1.32mm off-board connection point	N/A	N/A

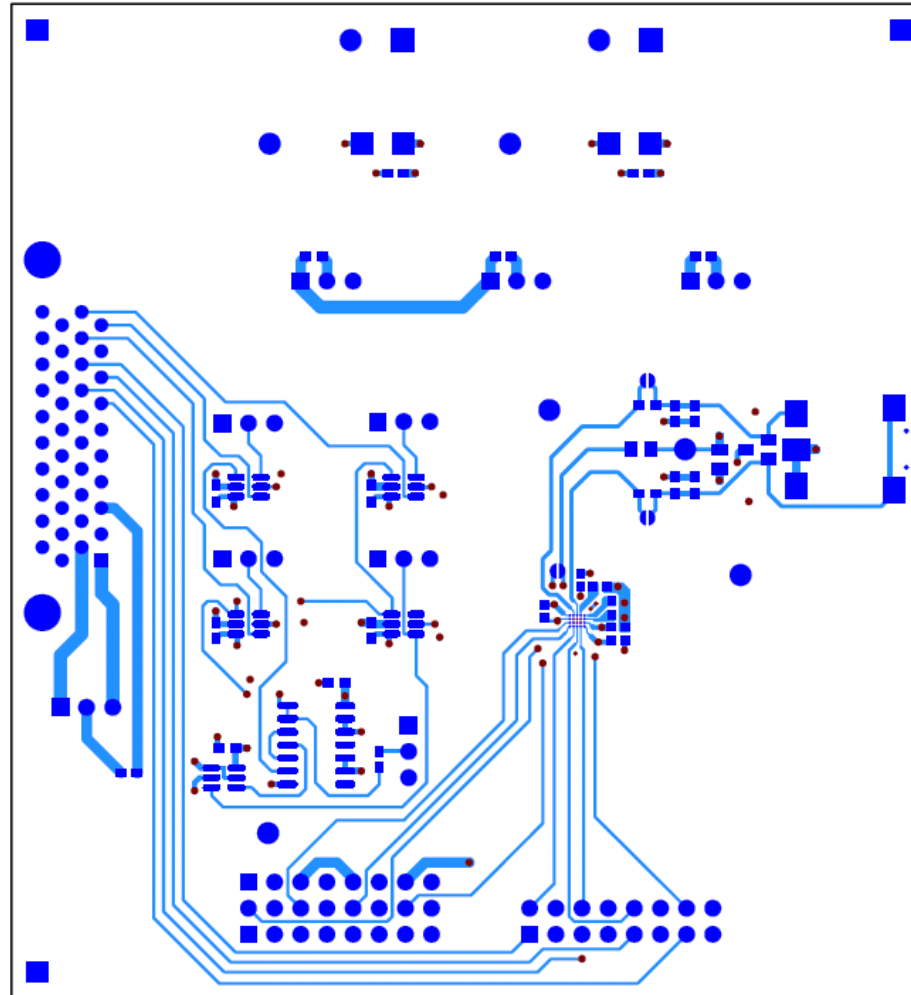
PCB LAYOUT



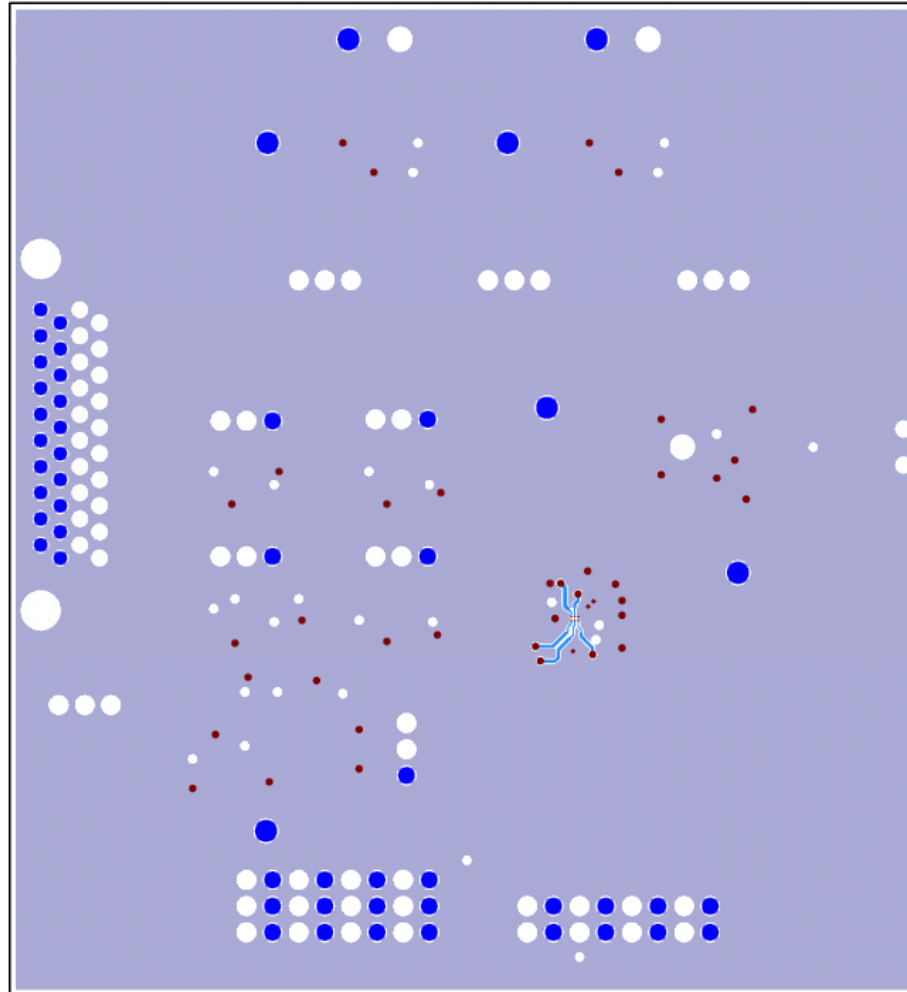
Top Layer: Overview



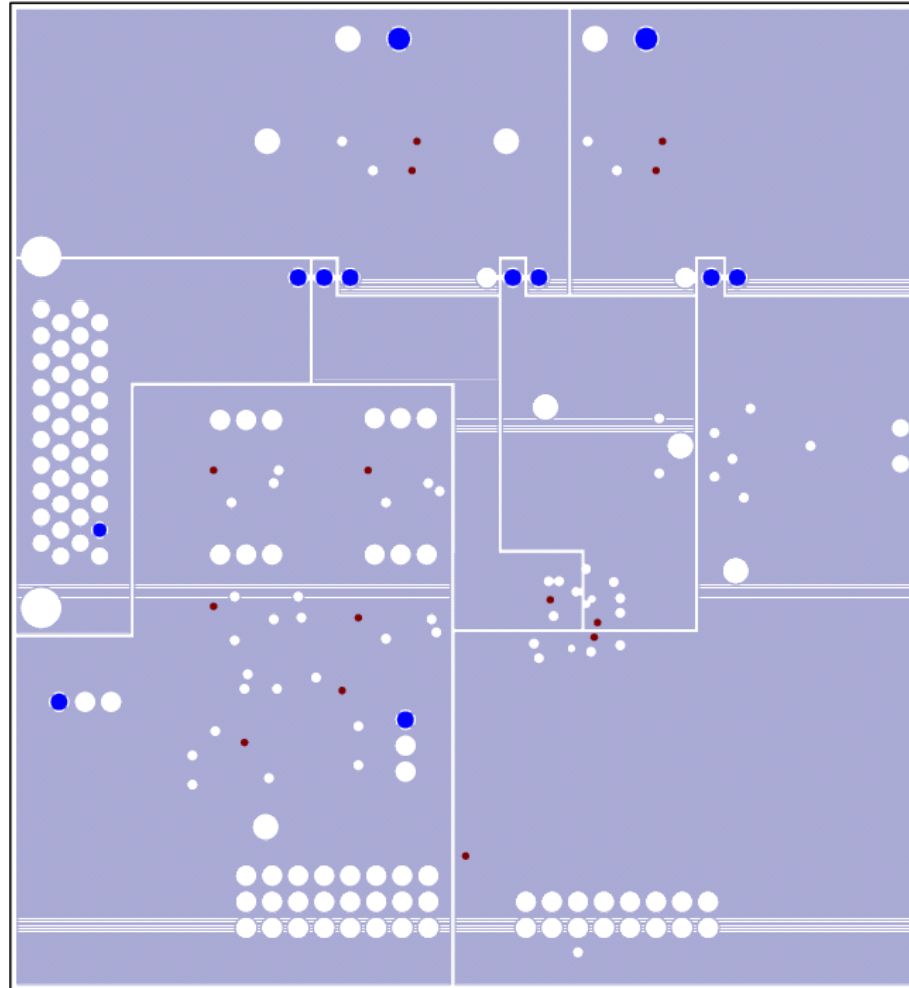
Top Layer: Silkscreen + Copper



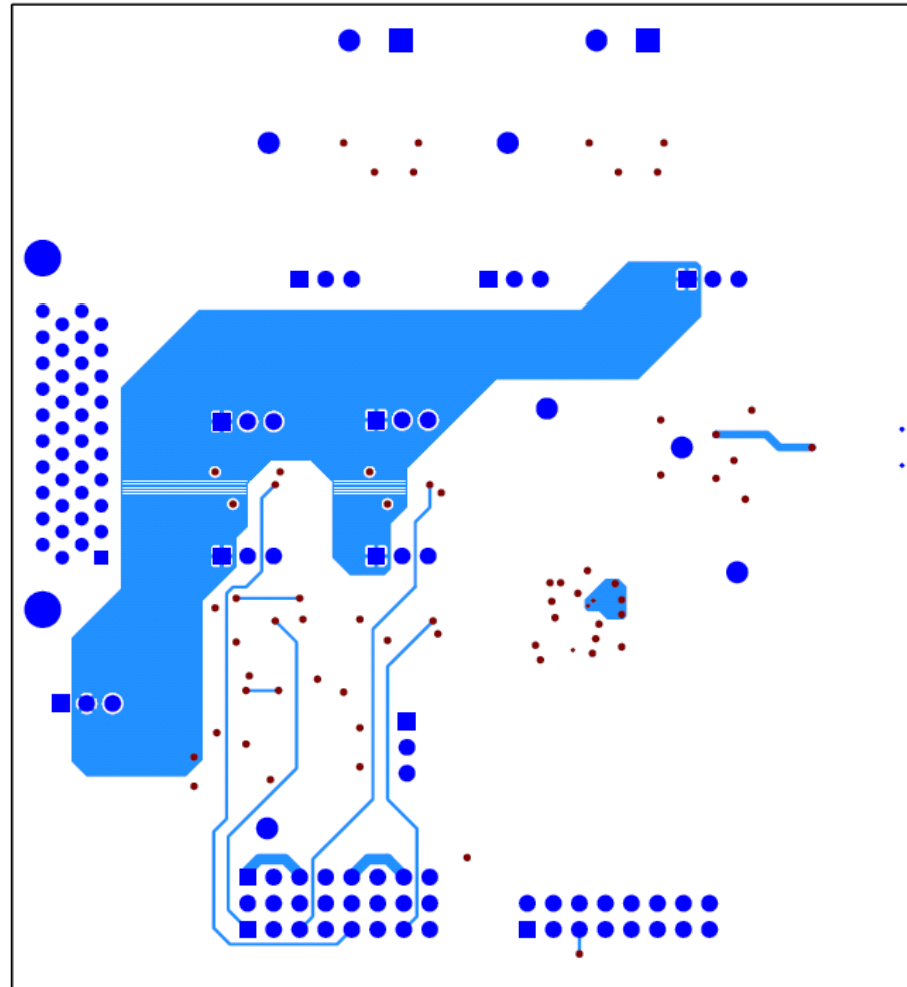
Top Layer: Copper



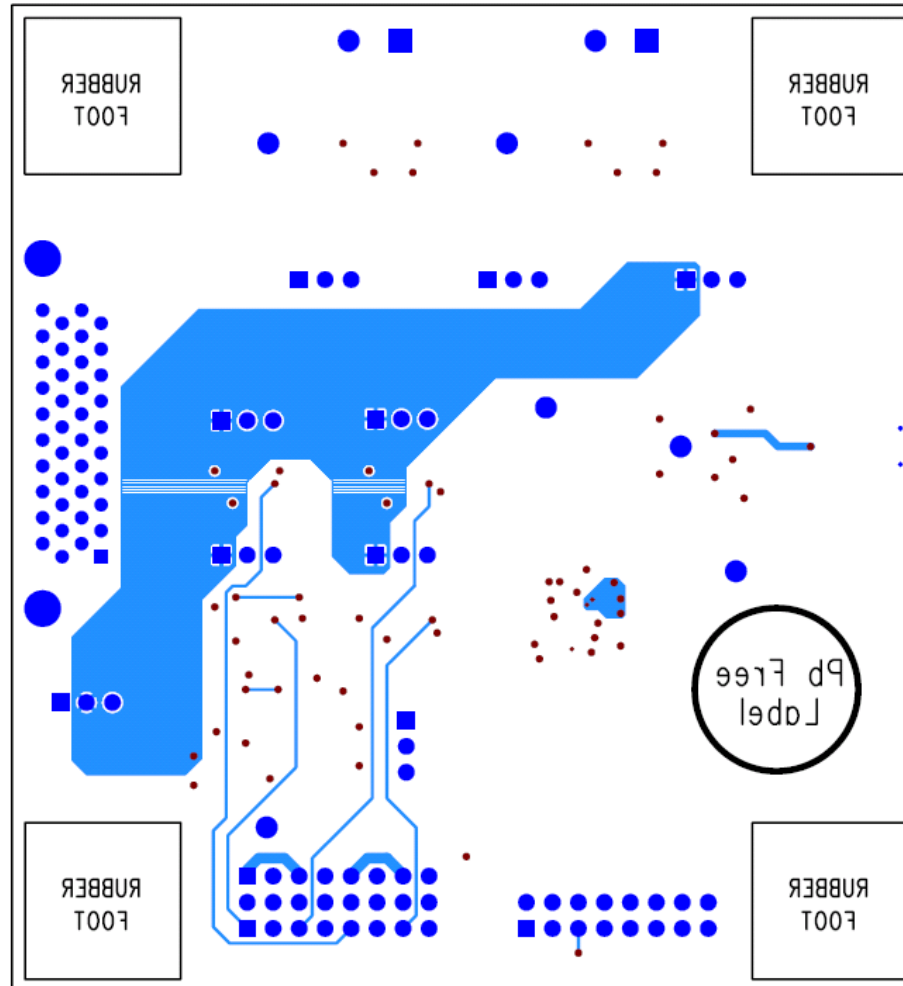
Layer 2



Layer 3

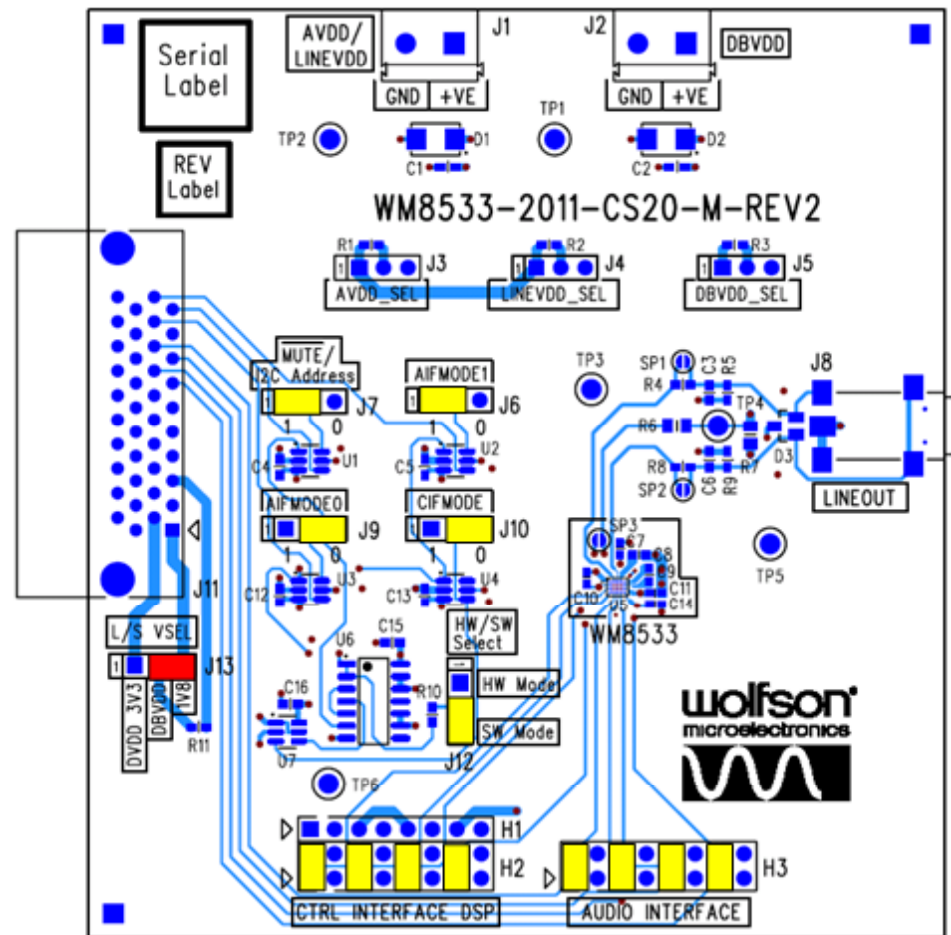


Bottom Layer: Copper



Bottom Layer: Silkscreen + Copper

DEFAULT BOARD CONFIGURATION



USB Power from 2011-EV1: LINE/AVDD 3V3 DBVDD=1V8, Software I2C Mode, Address 0x36

TECHNICAL SUPPORT

If you require more information or require technical support, please contact the nearest Wolfson Microelectronics regional office:

<http://www.wolfsonmicro.com/contact>

or one of our global distributors:

<http://www.wolfsonmicro.com/distribution>

IMPORTANT NOTICE

Wolfson Microelectronics plc (“Wolfson”) products and services are sold subject to Wolfson’s terms and conditions of sale, delivery and payment supplied at the time of order acknowledgement.

Wolfson warrants performance of its products to the specifications in effect at the date of shipment. Wolfson reserves the right to make changes to its products and specifications or to discontinue any product or service without notice. Customers should therefore obtain the latest version of relevant information from Wolfson to verify that the information is current.

Testing and other quality control techniques are utilised to the extent Wolfson deems necessary to support its warranty. Specific testing of all parameters of each device is not necessarily performed unless required by law or regulation.

In order to minimise risks associated with customer applications, the customer must use adequate design and operating safeguards to minimise inherent or procedural hazards. Wolfson is not liable for applications assistance or customer product design. The customer is solely responsible for its selection and use of Wolfson products. Wolfson is not liable for such selection or use nor for use of any circuitry other than circuitry entirely embodied in a Wolfson product.

Wolfson’s products are not intended for use in life support systems, appliances, nuclear systems or systems where malfunction can reasonably be expected to result in personal injury, death or severe property or environmental damage. Any use of products by the customer for such purposes is at the customer’s own risk.

Wolfson does not grant any licence (express or implied) under any patent right, copyright, mask work right or other intellectual property right of Wolfson covering or relating to any combination, machine, or process in which its products or services might be or are used. Any provision or publication of any third party’s products or services does not constitute Wolfson’s approval, licence, warranty or endorsement thereof. Any third party trade marks contained in this document belong to the respective third party owner.

Reproduction of information from Wolfson datasheets is permissible only if reproduction is without alteration and is accompanied by all associated copyright, proprietary and other notices (including this notice) and conditions. Wolfson is not liable for any unauthorised alteration of such information or for any reliance placed thereon.

Any representations made, warranties given, and/or liabilities accepted by any person which differ from those contained in this datasheet or in Wolfson’s standard terms and conditions of sale, delivery and payment are made, given and/or accepted at that person’s own risk. Wolfson is not liable for any such representations, warranties or liabilities or for any reliance placed thereon by any person.

ADDRESS:

Wolfson Microelectronics plc
Westfield House
26 Westfield Road
Edinburgh
EH11 2QB
United Kingdom
Tel :: +44 (0)131 272 7000
Fax :: +44 (0)131 272 7001
Email :: apps@wolfsonmicro.com